

Supporting Information for the paper

Isolation and Tandem Mass Spectrometric Identification of a Stable Monolayer Protected Silver-Palladium Alloy Cluster

Sreya Sarkar,^a Indranath Chakraborty,^b Manoj Kumar Panwar and T. Pradeep*
DST Unit of Nanoscience (DST UNS) and Thematic Unit of Excellence, Department of Chemistry,

Indian Institute of Technology Madras, Chennai 600 036, India.

^{a, b}Contributed equally

Contents

Number	Description	Page number
S1	Materials and methods	7
S2	Photographs during synthesis	9
S3	HPLC at different flow rates	10
S4	UV/Vis spectra of all the clusters	11
S5	ESI MS spectra of all the clusters	12
S6	MS/MS data of peak at m/z 2604	13
S7	MS/MS data of peak at m/z 2204	14
S8	MS/MS of 2839 with different isotope width	15
Table S1	Predicted assignments for a fragment derived from m/z 2839	16
S9	Computed and experimental mass spectrum of a MS/MS fragment	38
S10	SEM/EDAX of cluster 2	39
S11	XPS spectra of cluster 2	40

Supporting information 1.

Materials and methods:

1. Chemicals:

Silver trifluoroacetate (CF_3COOAg , Aldrich, 98%), sodium tetrachloropalladate (Na_2PdCl_4 , Aldrich, 98%), benzeneselenol (PhSeH , Aldrich, 97%), sodium borohydride (NaBH_4 , Aldrich, 99.99%), acetonitrile (HPLC grade, Aldrich) were used for synthesis. All the chemicals were commercially available and were used without further purification.

2. Instrumentation

The UV/Vis measurements were carried out at ambient temperature using a double-beam spectrometer (Jasco V-630). The absorbances of raw spectral data were corrected $[I(E)]$ using the following equation and plotted in terms of energy ($1239.8/\text{Wavelength in nm} = \text{Energy (eV)}$).

$$I(E) = \frac{I(w)}{\partial E/\partial w} \propto I(w)w^2$$

HPLC measurement was done using a Shimadzu HPLC system equipped with a normal phase column (Shimadzu) and a UV/Vis detector. Isocratic mode was used. ESI MS measurements were done using LTQ XL mass spectrometer from Thermo Scientific, San Jose, CA. Acetonitrile was used as the solvent and the spectra were collected in negative ion mode. High resolution transmission electron microscopy of clusters was carried out with a JEOL 3010 instrument. The samples were drop casted on carbon-coated copper grids and allowed to dry under ambient conditions. For reduced beam-induced damage, the samples were imaged at 200 keV. Scanning electron microscopy (SEM) and energy dispersive spectroscopy (EDS) studies were performed with a FEI QUANTA-200 SEM. For measurements, samples were drop casted on an indium tin oxide (ITO) coated glass and dried in vacuum. X-ray photoelectron spectroscopy (XPS) measurements were conducted using an Omicron ESCA Probe spectrometer with polychromatic $\text{MgK}\alpha$ X-rays ($h\nu = 1253.6 \text{ eV}$). The samples were spotted as drop-cast films on a sample stub. Constant analyzer energy of 20 eV was used for the measurements.

3. Computation

We have developed a novel algorithm to combinatorially enumerate the possible number of isotope combinations appearing in high resolution mass spectra and tandem mass spectra (MS/MS^n) of any given species. We apply this algorithm to this an alloy cluster fragment, $\text{Ag}_5\text{Pd}_4\text{Se}_6\text{C}_{36}\text{H}_{30}^-$, derived from m/z 2839. Possible combinations for this cluster fragment are more than 465 million and therefore, it is a resource and time consuming task.

Briefly, the methodology is as follows. Let us consider a molecule or ion with k different elements. Let each of the distinct elements be denoted by E_i , where $1 \leq i \leq k$ and each E_i has n_i number of atoms and m_i number of isotopes. The number of possible combinations N_i for each E_i will be,

$$N_i = \binom{n_i + m_i - 1}{m_i} = \frac{(n_i + m_i - 1)!}{(n_i)!(m_i - 1)!}$$

So the total number of isotope combinations for the molecule will be the product N where,

$$N = \prod_{1 \leq i \leq k} N_i$$

which is the total number of peaks in the high resolution mass spectrum. The total combination for $\text{Ag}_5\text{Pd}_4\text{Se}_6\text{C}_{36}\text{H}_{30}$ are,

$$N_i = \binom{5 + 2 - 1}{2} \binom{4 + 6 - 1}{6} \binom{6 + 6 - 1}{6} \binom{36 + 2 - 1}{2} \binom{30 + 2 - 1}{2} \\ = 465230304 \approx 465 \text{ million}$$

We perform the calculations based on our algorithm. We have executed it three times to select peaks whose contributions in the mass spectral abundances were more than or equal to 1.0, 0.5, and 10^{-4} and the number of peaks computed were 29255, 46555 and 1027865, respectively in each of these cases. We have used natural abundances and masses of isotopes for these elements. We have performed these calculations on a desktop computer with an i7 processor (2.2 GHz) and 8 Gb RAM. We have shown part of the mass spectrum and number of isotopes from the third run (i.e. peaks with abundance greater than equal to 10^{-4}) in the table below (TableS1).

Supporting information 2.

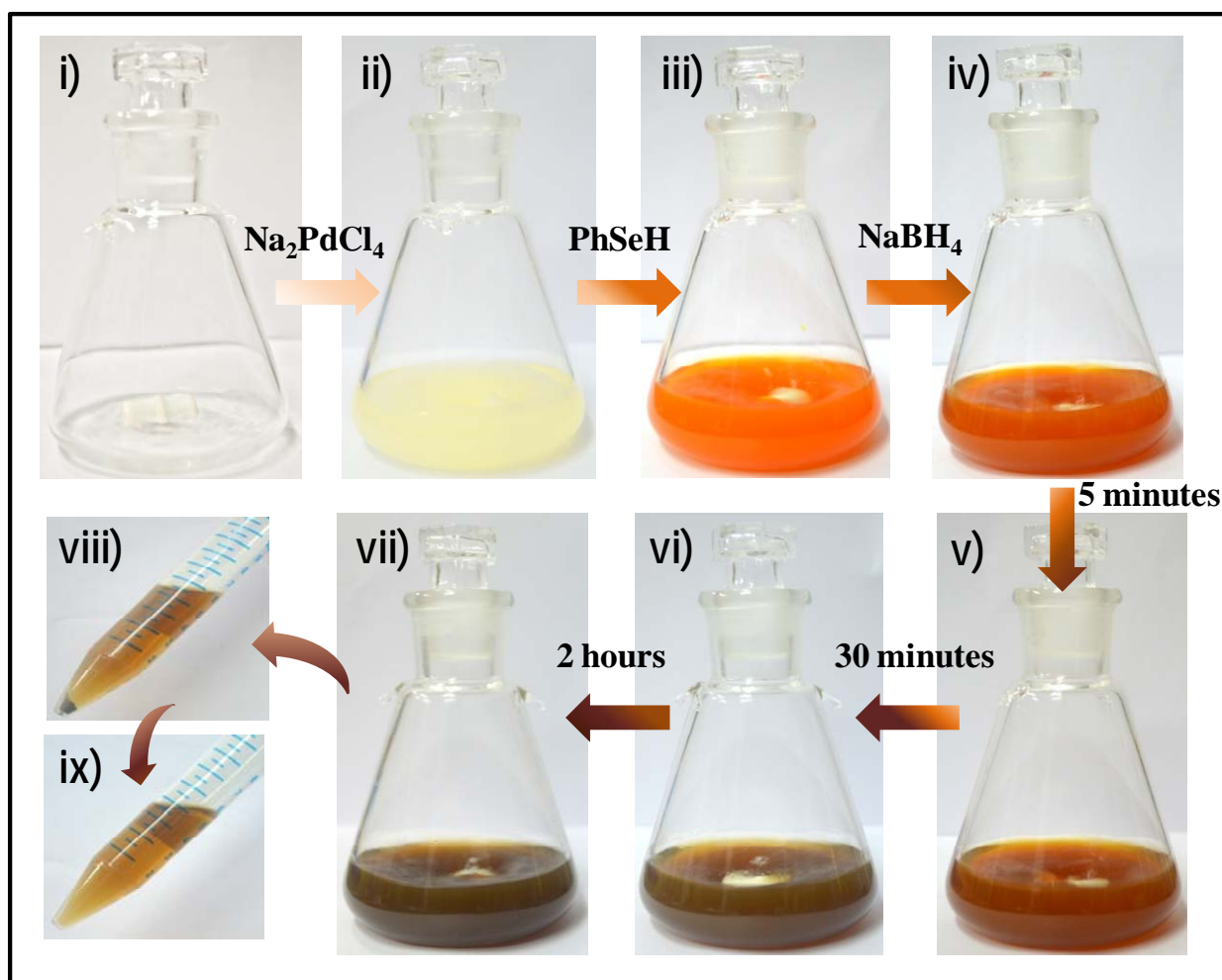


Figure S2. Photographs at different stages of solution state synthesis - i) Silver trifluoroacetate in acetonitrile, ii) addition of sodium tetrachloropalladate to the mixture, iii) addition of benzeneselenol, iv) just after the addition of sodium borohydride, v) reaction mixture after 5 minutes, vi) after 30 minutes, and vii) after 2 hours. After the synthesis, the cluster was centrifuged (viii) and the centrifugate was collected (ix) which contains the crude cluster.

Supporting information 3.

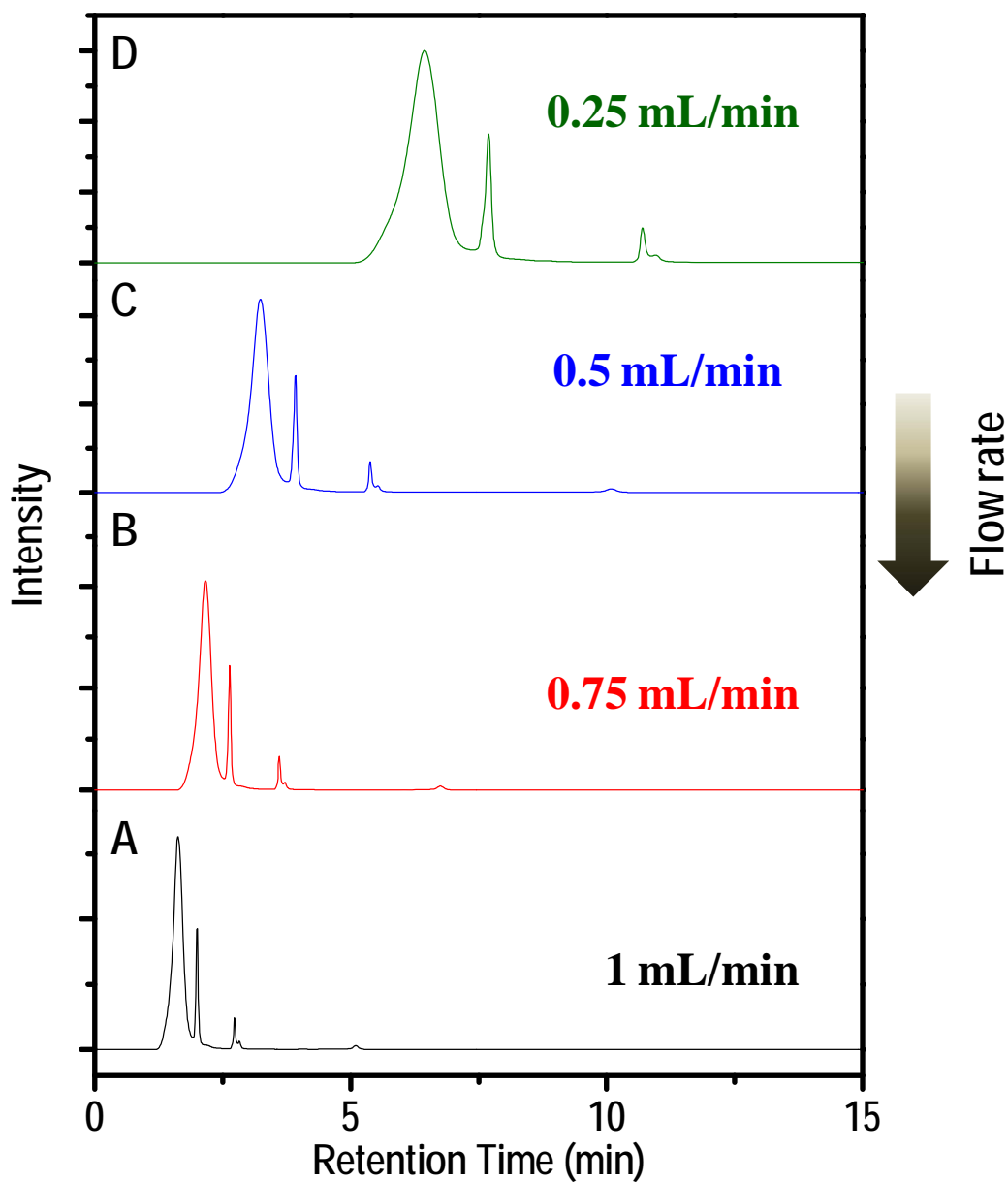


Figure S3. Chromatogram under different flow rates: 1 (A), 0.75 (B), 0.5 (C), and 0.25 (D) mL/min, respectively. Best separation came at 0.25 mL/min flow rate. Chromatograms have been shifted vertically for clarity.

Supporting information 4.

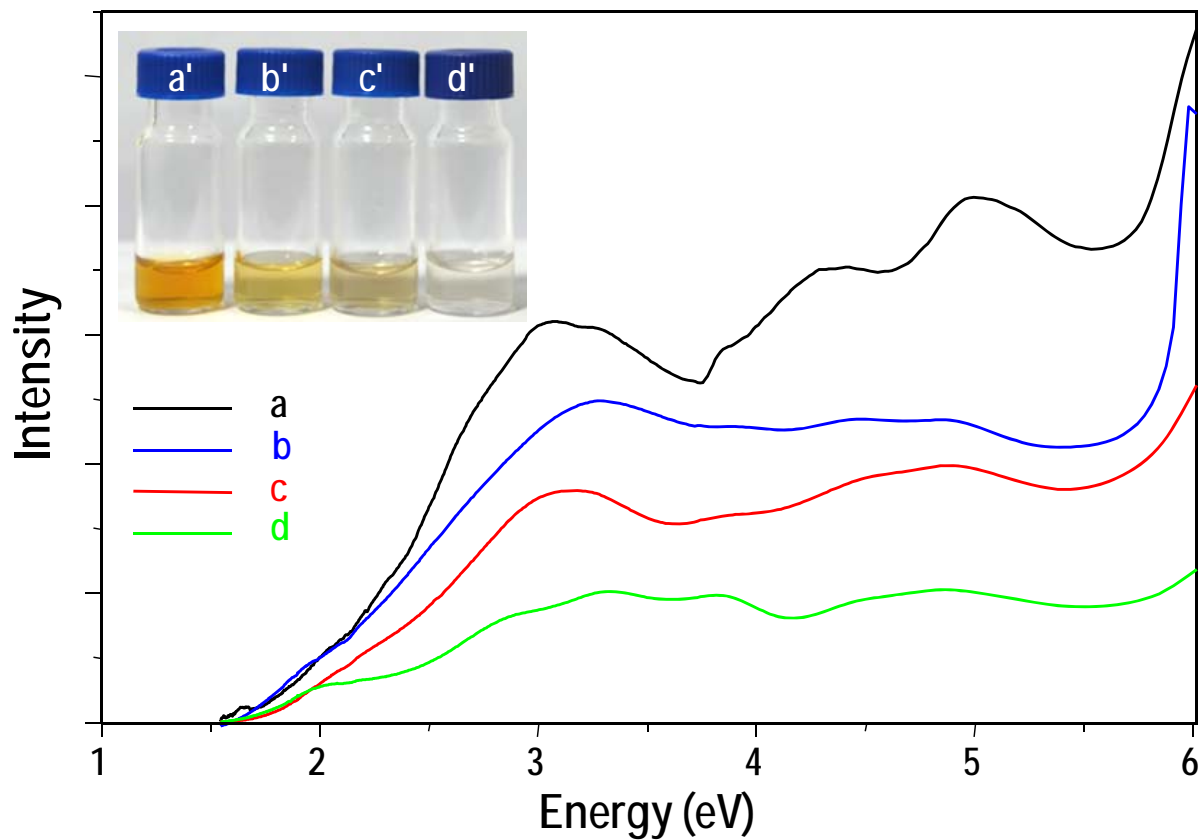


Figure S4. UV/Vis absorption spectra of as-synthesized crude (a), isolated 1(b), isolated 2 (c), and isolated 3 clusters (d), respectively. Inset shows the corresponding photographs of cluster solutions which are marked with a', b', c' and d', respectively. Concentration in d is small which gives a faint appearance.

Supporting information 5.

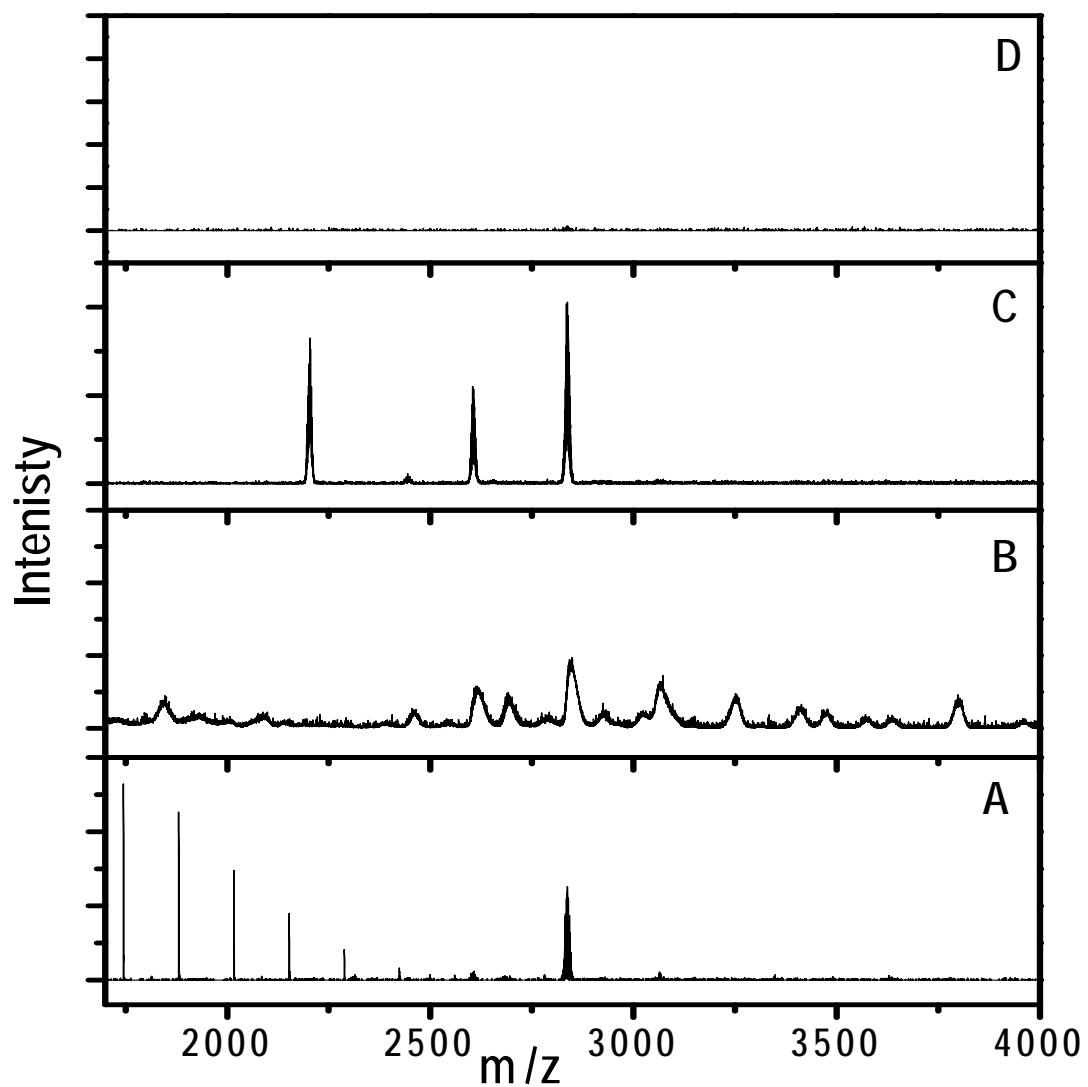


Figure S5. ESI MS spectra of crude cluster (A), isolated cluster 1(B), cluster 2(C), and cluster 3(D), respectively. Spectra have been shifted vertically for clarity.

Supporting information 6.

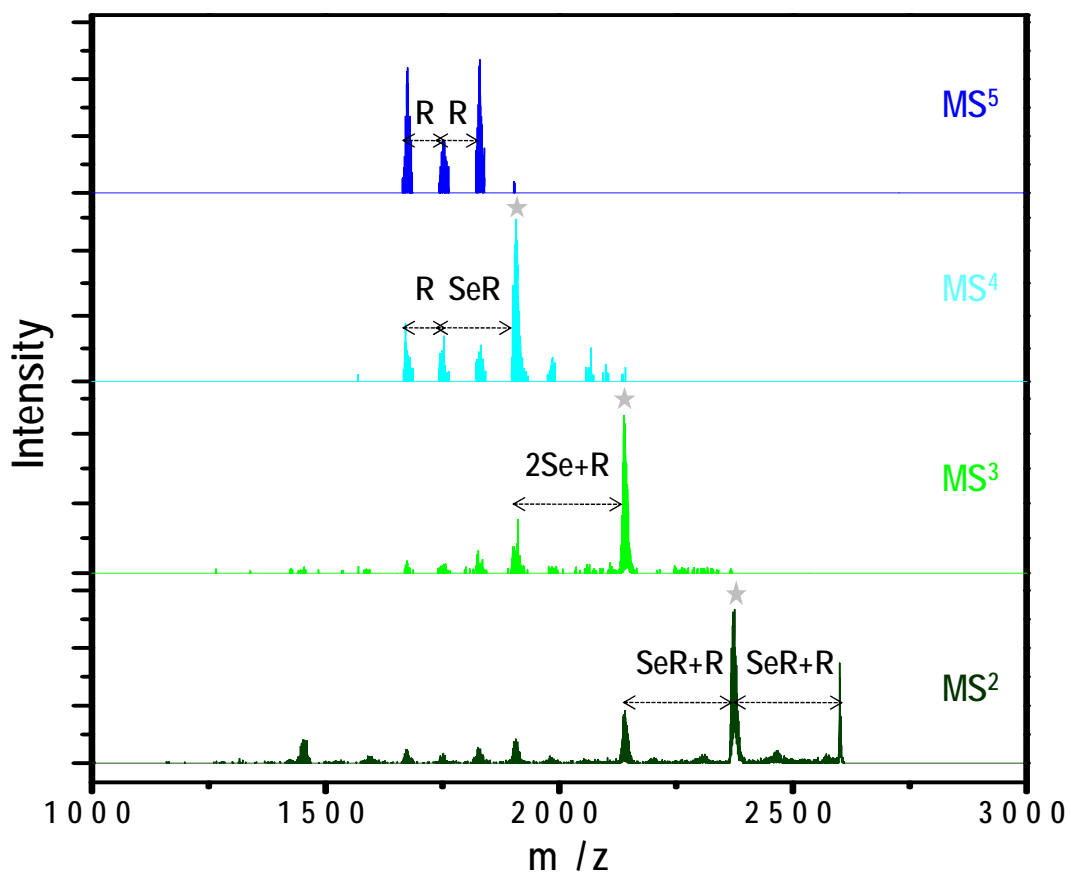


Figure S6. MS/MS data of m/z 2604. Repeated MS/MS spectra were done with peaks marked with grey star. Spectra have been shifted vertically for clarity.

Supporting information 7.

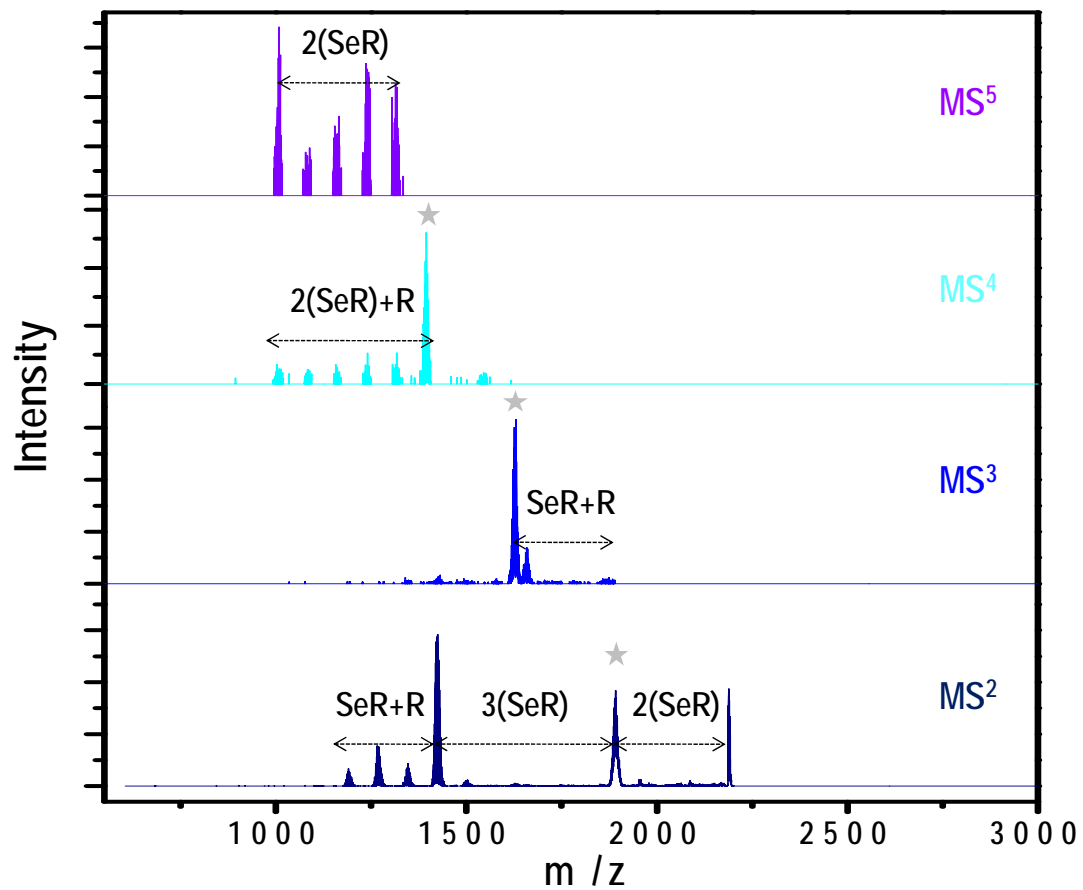


Figure S7. MS/MS data of m/z 2204. Repeated MS/MS were done with the peaks marked with grey star. Spectra have been shifted vertically for clarity.

Supporting information 8.

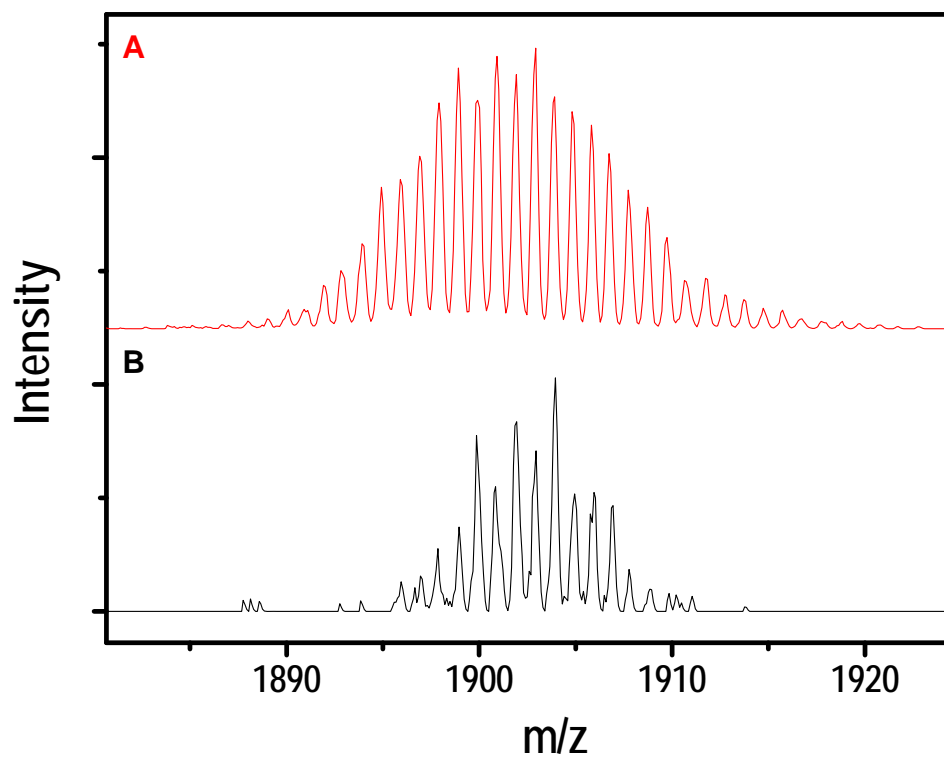


Figure S8. Comparative MS/MS spectra of m/z 2839 collected with a given isotope width of 30(A) and 1(B), respectively. Spectra have been shifted vertically for clarity.

Table S1

Table S1: Individual peak assignment for MS/MS fragment derived from m/z 2839. The abundances ≥ 20 are shown here. Essential details of the calculation are discussed in S1.

$\text{Ag}_5\text{Pd}_4(\text{SeC}_6\text{H}_5)_6^-$																				
ID	Mass	Abundance	Pd (isotopes)						Ag (isotopes)		Se (isotopes)						H (isotopes)		C (isotopes)	
			102	104	105	106	108	110	107	109	74	76	77	78	80	82	1	2	12	13
1	1891.88059	25.98811606	0	1	2	1	0	0	3	2	0	1	0	2	3	0	30	0	36	0
2	1891.881595	20.41977997	0	1	1	2	0	0	3	2	0	1	1	1	3	0	30	0	36	0
3	1891.882355	21.2803997	0	1	1	1	1	0	4	1	0	1	1	1	3	0	30	0	36	0
4	1891.882801	28.41727798	0	1	1	1	1	0	3	2	0	1	1	2	2	0	30	0	36	0
5	1892.87899	31.80721952	0	1	1	2	0	0	3	2	0	1	0	2	3	0	30	0	36	0
6	1892.87975	33.14777856	0	1	1	1	1	0	4	1	0	1	0	2	3	0	30	0	36	0
7	1892.880197	29.50977272	0	1	1	1	1	0	3	2	0	1	0	3	2	0	30	0	36	0
8	1892.88129	21.16214787	0	1	2	1	0	0	3	2	0	0	1	2	3	0	30	0	36	0
9	1892.881313	24.27819074	0	1	1	1	1	0	3	2	0	2	0	1	3	0	30	0	36	0
10	1892.88155	21.40385391	0	0	1	2	1	0	3	2	0	2	0	2	2	0	30	0	36	0
11	1892.882644	20.46560533	0	0	2	2	0	0	3	2	0	1	1	1	3	0	30	0	36	0
12	1892.883404	21.32815643	0	0	2	1	1	0	4	1	0	1	1	1	3	0	30	0	36	0
13	1892.88385	28.48105105	0	0	2	1	1	0	3	2	0	1	1	2	2	0	30	0	36	0
14	1893.87815	20.28501541	0	1	0	2	1	0	4	1	0	1	0	2	3	0	30	0	36	0
15	1893.878685	21.97572105	0	1	2	1	0	0	3	2	0	0	0	3	3	0	30	0	36	0
16	1893.87969	25.9006494	0	1	1	2	0	0	3	2	0	0	1	2	3	0	30	0	36	0
17	1893.879802	27.11969789	0	1	2	1	0	0	3	2	0	1	0	1	4	0	30	0	36	0
18	1893.880039	31.87860017	0	0	2	2	0	0	3	2	0	1	0	2	3	0	30	0	36	0
19	1893.880249	24.14328066	0	1	2	1	0	0	2	3	0	1	0	2	3	0	30	0	36	0
20	1893.88045	26.99226792	0	1	1	1	1	0	4	1	0	0	1	2	3	0	30	0	36	0
21	1893.880799	33.22216765	0	0	2	1	1	0	4	1	0	1	0	2	3	0	30	0	36	0
22	1893.880897	24.02983627	0	1	1	1	1	0	3	2	0	0	1	3	2	0	30	0	36	0
23	1893.881009	25.16083245	0	1	2	0	1	0	3	2	0	1	0	2	3	0	30	0	36	0
24	1893.881246	29.57599753	0	0	2	1	1	0	3	2	0	1	0	3	2	0	30	0	36	0
25	1893.881804	26.10382961	0	0	1	2	1	0	4	1	0	1	1	1	3	0	30	0	36	0
26	1893.882014	39.53950808	0	1	1	1	1	0	3	2	0	1	1	1	3	0	30	0	36	0
27	1893.88225	34.8583576	0	0	1	2	1	0	3	2	0	1	1	2	2	0	30	0	36	0
28	1893.882362	24.33267501	0	0	2	1	1	0	3	2	0	2	0	1	3	0	30	0	36	0
29	1893.88246	26.4000208	0	1	1	1	1	0	2	3	0	1	1	2	2	0	30	0	36	0
30	1894.876638	22.65916333	0	1	1	2	0	0	4	1	0	0	0	2	4	0	30	0	36	0
31	1894.877085	26.89639302	0	1	1	2	0	0	3	2	0	0	0	3	3	0	30	0	36	0
32	1894.877845	28.02997853	0	1	1	1	1	0	4	1	0	0	0	3	3	0	30	0	36	0
33	1894.878202	33.19217838	0	1	1	2	0	0	3	2	0	1	0	1	4	0	30	0	36	0
34	1894.878439	26.01111104	0	0	1	3	0	0	3	2	0	1	0	2	3	0	30	0	36	0
35	1894.878649	29.54929961	0	1	1	2	0	0	2	3	0	1	0	2	3	0	30	0	36	0
36	1894.878962	34.59110842	0	1	1	1	1	0	4	1	0	1	0	1	4	0	30	0	36	0
37	1894.879199	40.66107666	0	0	1	2	1	0	4	1	0	1	0	2	3	0	30	0	36	0

38	1894.879409	61.58939103	0	1	1	1	1	0	3	2	0	1	0	2	3	0	30	0	36	0
39	1894.879646	36.19847794	0	0	1	2	1	0	3	2	0	1	0	3	2	0	30	0	36	0
40	1894.879856	27.41494318	0	1	1	1	1	0	2	3	0	1	0	3	2	0	30	0	36	0
41	1894.880414	24.19647908	0	1	0	2	1	0	3	2	0	1	1	1	3	0	30	0	36	0
42	1894.880502	22.08359604	0	1	2	1	0	0	3	2	0	0	1	1	4	0	30	0	36	0
43	1894.880739	25.95877474	0	0	2	2	0	0	3	2	0	0	1	2	3	0	30	0	36	0
44	1894.880762	29.78110202	0	0	1	2	1	0	3	2	0	2	0	1	3	0	30	0	36	0
45	1894.880972	22.55473893	0	1	1	1	1	0	2	3	0	2	0	1	3	0	30	0	36	0
46	1894.881499	27.05284303	0	0	2	1	1	0	4	1	0	0	1	2	3	0	30	0	36	0
47	1894.881709	20.48849003	0	1	2	0	1	0	3	2	0	0	1	2	3	0	30	0	36	0
48	1894.881946	24.08376319	0	0	2	1	1	0	3	2	0	0	1	3	2	0	30	0	36	0
49	1894.881969	20.72250181	0	0	1	1	2	0	3	2	0	2	0	2	2	0	30	0	36	0
50	1894.883063	39.62824127	0	0	2	1	1	0	3	2	0	1	1	1	3	0	30	0	36	0
51	1894.883509	26.45924804	0	0	2	1	1	0	2	3	0	1	1	2	2	0	30	0	36	0
52	1895.877362	21.16827123	0	1	0	2	1	0	4	1	0	1	0	1	4	0	30	0	36	0
53	1895.877687	22.71001424	0	0	2	2	0	0	4	1	0	0	0	2	4	0	30	0	36	0
54	1895.877809	37.69005949	0	1	0	2	1	0	3	2	0	1	0	2	3	0	30	0	36	0
55	1895.877897	34.39889108	0	1	2	1	0	0	3	2	0	0	0	2	4	0	30	0	36	0
56	1895.878134	26.95675297	0	0	2	2	0	0	3	2	0	0	0	3	3	0	30	0	36	0
57	1895.878344	20.41571616	0	1	2	1	0	0	2	3	0	0	0	3	3	0	30	0	36	0
58	1895.878894	28.09288243	0	0	2	1	1	0	4	1	0	0	0	3	3	0	30	0	36	0
59	1895.878902	27.02842274	0	1	1	2	0	0	3	2	0	0	1	1	4	0	30	0	36	0
60	1895.879104	21.27616462	0	1	2	0	1	0	3	2	0	0	0	3	3	0	30	0	36	0
61	1895.879139	21.18087218	0	0	1	3	0	0	3	2	0	0	1	2	3	0	30	0	36	0
62	1895.879251	33.26666711	0	0	2	2	0	0	3	2	0	1	0	1	4	0	30	0	36	0
63	1895.879349	24.06202306	0	1	1	2	0	0	2	3	0	0	1	2	3	0	30	0	36	0
64	1895.879461	25.19453415	0	1	2	1	0	0	2	3	0	1	0	1	4	0	30	0	36	0
65	1895.879662	28.16757281	0	1	1	1	1	0	4	1	0	0	1	1	4	0	30	0	36	0
66	1895.879698	29.61561312	0	0	2	2	0	0	2	3	0	1	0	2	3	0	30	0	36	0
67	1895.879899	33.11035378	0	0	1	2	1	0	4	1	0	0	1	2	3	0	30	0	36	0
68	1895.880011	34.66873658	0	0	2	1	1	0	4	1	0	1	0	1	4	0	30	0	36	0
69	1895.880109	50.15230027	0	1	1	1	1	0	3	2	0	0	1	2	3	0	30	0	36	0
70	1895.880221	26.25639247	0	1	2	0	1	0	3	2	0	1	0	1	4	0	30	0	36	0
71	1895.880346	29.47645536	0	0	1	2	1	0	3	2	0	0	1	3	2	0	30	0	36	0
72	1895.880458	61.7276078	0	0	2	1	1	0	3	2	0	1	0	2	3	0	30	0	36	0
73	1895.880556	22.32401456	0	1	1	1	1	0	2	3	0	0	1	3	2	0	30	0	36	0
74	1895.880668	23.37472397	0	1	2	0	1	0	2	3	0	1	0	2	3	0	30	0	36	0
75	1895.880905	27.47646684	0	0	2	1	1	0	2	3	0	1	0	3	2	0	30	0	36	0
76	1895.881226	20.63057421	0	1	1	1	1	0	3	2	0	1	1	0	4	0	30	0	36	0
77	1895.881463	48.50155996	0	0	1	2	1	0	3	2	0	1	1	1	3	0	30	0	36	0
78	1895.881673	36.73269115	0	1	1	1	1	0	2	3	0	1	1	1	3	0	30	0	36	0
79	1895.881909	32.38384456	0	0	1	2	1	0	2	3	0	1	1	2	2	0	30	0	36	0
80	1895.882021	22.60535549	0	0	2	1	1	0	2	3	0	2	0	1	3	0	30	0	36	0
81	1895.882192	20.87360848	0	1	1	1	1	0	3	2	0	1	1	1	2	1	30	0	36	0
82	1895.882223	25.27286248	0	0	1	1	2	0	4	1	0	1	1	1	3	0	30	0	36	0

83	1895.882669	33.74870626	0	0	1	1	2	0	3	2	0	1	1	2	2	0	30	0	36	0
84	1895.882764	24.66066618	0	1	1	1	1	0	3	2	0	1	0	2	3	0	30	0	35	1
85	1896.876297	42.10128496	0	1	1	2	0	0	3	2	0	0	0	2	4	0	30	0	36	0
86	1896.876534	21.99516521	0	0	1	3	0	0	3	2	0	0	0	3	3	0	30	0	36	0
87	1896.876744	24.98708117	0	1	1	2	0	0	2	3	0	0	0	3	3	0	30	0	36	0
88	1896.877057	43.87570156	0	1	1	1	1	0	4	1	0	0	0	2	4	0	30	0	36	0
89	1896.877294	34.38327258	0	0	1	2	1	0	4	1	0	0	0	3	3	0	30	0	36	0
90	1896.877504	52.0803922	0	1	1	1	1	0	3	2	0	0	0	3	3	0	30	0	36	0
91	1896.877651	27.14369345	0	0	1	3	0	0	3	2	0	1	0	1	4	0	30	0	36	0
92	1896.877741	22.95725242	0	0	1	2	1	0	3	2	0	0	0	4	2	0	30	0	36	0
93	1896.877861	30.8359435	0	1	1	2	0	0	2	3	0	1	0	1	4	0	30	0	36	0
94	1896.878098	24.16464268	0	0	1	3	0	0	2	3	0	1	0	2	3	0	30	0	36	0
95	1896.87838	23.36365388	0	1	1	2	0	0	3	2	0	1	0	1	3	1	30	0	36	0
96	1896.878411	42.43155266	0	0	1	2	1	0	4	1	0	1	0	1	4	0	30	0	36	0
97	1896.878509	30.69105164	0	1	0	2	1	0	3	2	0	0	1	2	3	0	30	0	36	0
98	1896.878621	64.27113355	0	1	1	1	1	0	3	2	0	1	0	1	4	0	30	0	36	0
99	1896.878858	75.54928442	0	0	1	2	1	0	3	2	0	1	0	2	3	0	30	0	36	0
100	1896.878946	22.98405858	0	0	3	1	0	0	3	2	0	0	0	2	4	0	30	0	36	0
101	1896.879068	57.21730463	0	1	1	1	1	0	2	3	0	1	0	2	3	0	30	0	36	0
102	1896.87914	24.34834723	0	1	1	1	1	0	4	1	0	1	0	1	3	1	30	0	36	0
103	1896.879305	33.6288329	0	0	1	2	1	0	2	3	0	1	0	3	2	0	30	0	36	0
104	1896.879377	21.46570445	0	0	1	2	1	0	4	1	0	1	0	2	2	1	30	0	36	0
105	1896.879587	32.51413326	0	1	1	1	1	0	3	2	0	1	0	2	2	1	30	0	36	0
106	1896.879618	39.3667065	0	0	1	1	2	0	4	1	0	1	0	2	3	0	30	0	36	0
107	1896.879828	29.81440334	0	1	1	0	2	0	3	2	0	1	0	2	3	0	30	0	36	0
108	1896.879951	27.08907898	0	0	2	2	0	0	3	2	0	0	1	1	4	0	30	0	36	0
109	1896.880065	35.04616635	0	0	1	1	2	0	3	2	0	1	0	3	2	0	30	0	36	0
110	1896.880073	22.47882779	0	1	0	2	1	0	2	3	0	1	1	1	3	0	30	0	36	0
111	1896.880161	20.51593336	0	1	2	1	0	0	2	3	0	0	1	1	4	0	30	0	36	0
112	1896.880398	24.11602221	0	0	2	2	0	0	2	3	0	0	1	2	3	0	30	0	36	0
113	1896.880421	27.66701144	0	0	1	2	1	0	2	3	0	2	0	1	3	0	30	0	36	0
114	1896.880684	27.27995702	0	1	1	1	0	1	3	2	0	1	0	2	3	0	30	0	36	0
115	1896.880711	28.2307855	0	0	2	1	1	0	4	1	0	0	1	1	4	0	30	0	36	0
116	1896.880833	23.42622893	0	1	0	1	2	0	3	2	0	1	1	1	3	0	30	0	36	0
117	1896.880921	21.3806056	0	1	2	0	1	0	3	2	0	0	1	1	4	0	30	0	36	0
118	1896.881069	20.65275732	0	0	0	2	2	0	3	2	0	1	1	2	2	0	30	0	36	0
119	1896.881158	50.26485032	0	0	2	1	1	0	3	2	0	0	1	2	3	0	30	0	36	0
120	1896.881181	28.83307572	0	0	1	1	2	0	3	2	0	2	0	1	3	0	30	0	36	0
121	1896.881605	22.37411334	0	0	2	1	1	0	2	3	0	0	1	3	2	0	30	0	36	0
122	1896.882275	20.67687263	0	0	2	1	1	0	3	2	0	1	1	0	4	0	30	0	36	0
123	1896.882722	36.81512538	0	0	2	1	1	0	2	3	0	1	1	1	3	0	30	0	36	0
124	1896.883241	20.9204523	0	0	2	1	1	0	3	2	0	1	1	1	2	1	30	0	36	0
125	1896.883464	20.08120415	0	1	1	1	1	0	3	2	0	0	1	2	3	0	30	0	35	1
126	1896.883813	24.71600878	0	0	2	1	1	0	3	2	0	1	0	2	3	0	30	0	35	1
127	1897.875457	26.85004307	0	1	0	2	1	0	4	1	0	0	0	2	4	0	30	0	36	0

128	1897.875667	20.33489934	0	2	0	1	1	0	3	2	0	0	0	2	4	0	30	0	36	0
129	1897.875904	31.87096101	0	1	0	2	1	0	3	2	0	0	0	3	3	0	30	0	36	0
130	1897.877021	39.33117062	0	1	0	2	1	0	3	2	0	1	0	1	4	0	30	0	36	0
131	1897.87711	28.71735778	0	1	2	1	0	0	3	2	0	0	0	1	5	0	30	0	36	0
132	1897.877258	30.82194273	0	0	0	3	1	0	3	2	0	1	0	2	3	0	30	0	36	0
133	1897.877346	42.1957672	0	0	2	2	0	0	3	2	0	0	0	2	4	0	30	0	36	0
134	1897.877468	35.01453058	0	1	0	2	1	0	2	3	0	1	0	2	3	0	30	0	36	0
135	1897.877556	31.95699449	0	1	2	1	0	0	2	3	0	0	0	2	4	0	30	0	36	0
136	1897.877781	20.49441847	0	1	0	1	2	0	4	1	0	1	0	1	4	0	30	0	36	0
137	1897.877793	25.04315631	0	0	2	2	0	0	2	3	0	0	0	3	3	0	30	0	36	0
138	1897.878018	24.09073194	0	0	0	2	2	0	4	1	0	1	0	2	3	0	30	0	36	0
139	1897.878076	24.2130473	0	1	2	1	0	0	3	2	0	0	0	2	3	1	30	0	36	0
140	1897.878106	43.97416588	0	0	2	1	1	0	4	1	0	0	0	2	4	0	30	0	36	0
141	1897.878228	36.49026616	0	1	0	1	2	0	3	2	0	1	0	2	3	0	30	0	36	0
142	1897.878316	33.303866	0	1	2	0	1	0	3	2	0	0	0	2	4	0	30	0	36	0
143	1897.878351	22.10313565	0	0	1	3	0	0	3	2	0	0	1	1	4	0	30	0	36	0
144	1897.878465	21.44674712	0	0	0	2	2	0	3	2	0	1	0	3	2	0	30	0	36	0
145	1897.878553	52.1972692	0	0	2	1	1	0	3	2	0	0	0	3	3	0	30	0	36	0
146	1897.878561	25.10973841	0	1	1	2	0	0	2	3	0	0	1	1	4	0	30	0	36	0
147	1897.87891	30.90514445	0	0	2	2	0	0	2	3	0	1	0	1	4	0	30	0	36	0
148	1897.879111	34.55205408	0	0	1	2	1	0	4	1	0	0	1	1	4	0	30	0	36	0
149	1897.879321	52.33604578	0	1	1	1	1	0	3	2	0	0	1	1	4	0	30	0	36	0
150	1897.879429	23.41608578	0	0	2	2	0	0	3	2	0	1	0	1	3	1	30	0	36	0
151	1897.879558	61.51985487	0	0	1	2	1	0	3	2	0	0	1	2	3	0	30	0	36	0
152	1897.87967	64.41536859	0	0	2	1	1	0	3	2	0	1	0	1	4	0	30	0	36	0
153	1897.879768	46.59210612	0	1	1	1	1	0	2	3	0	0	1	2	3	0	30	0	36	0
154	1897.87988	24.39251275	0	1	2	0	1	0	2	3	0	1	0	1	4	0	30	0	36	0
155	1897.880005	27.38399093	0	0	1	2	1	0	2	3	0	0	1	3	2	0	30	0	36	0
156	1897.880117	57.34570971	0	0	2	1	1	0	2	3	0	1	0	2	3	0	30	0	36	0
157	1897.880189	24.40298894	0	0	2	1	1	0	4	1	0	1	0	1	3	1	30	0	36	0
158	1897.880287	26.47628994	0	1	1	1	1	0	3	2	0	0	1	2	2	1	30	0	36	0
159	1897.880318	32.05634691	0	0	1	1	2	0	4	1	0	0	1	2	3	0	30	0	36	0
160	1897.880528	24.27789728	0	1	1	0	2	0	3	2	0	0	1	2	3	0	30	0	36	0
161	1897.880636	32.58710035	0	0	2	1	1	0	3	2	0	1	0	2	2	1	30	0	36	0
162	1897.880675	25.30671424	0	0	1	2	1	0	3	2	0	1	1	0	4	0	30	0	36	0
163	1897.880765	28.53812692	0	0	1	1	2	0	3	2	0	0	1	3	2	0	30	0	36	0
164	1897.880859	20.85322074	0	1	1	1	1	0	3	2	0	0	0	3	3	0	30	0	35	1
165	1897.880877	29.88131179	0	0	2	0	2	0	3	2	0	1	0	2	3	0	30	0	36	0
166	1897.881122	45.05854799	0	0	1	2	1	0	2	3	0	1	1	1	3	0	30	0	36	0
167	1897.881384	22.21409521	0	1	1	1	0	1	3	2	0	0	1	2	3	0	30	0	36	0
168	1897.881641	25.60483482	0	0	1	2	1	0	3	2	0	1	1	1	2	1	30	0	36	0
169	1897.881733	27.34117775	0	0	2	1	0	1	3	2	0	1	0	2	3	0	30	0	36	0
170	1897.881882	46.95760251	0	0	1	1	2	0	3	2	0	1	1	1	3	0	30	0	36	0
171	1897.881976	25.73444781	0	1	1	1	1	0	3	2	0	1	0	1	4	0	30	0	35	1
172	1897.882213	30.2502696	0	0	1	2	1	0	3	2	0	1	0	2	3	0	30	0	35	1

173	1897.882328	31.35296476	0	0	1	1	2	0	2	3	0	1	1	2	2	0	30	0	36	0
174	1897.882423	22.91006333	0	1	1	1	1	0	2	3	0	1	0	2	3	0	30	0	35	1
175	1897.882738	21.4829283	0	0	1	2	0	1	3	2	0	1	1	1	3	0	30	0	36	0
176	1897.883498	22.38835588	0	0	1	1	1	1	4	1	0	1	1	1	3	0	30	0	36	0
177	1897.883944	29.8968131	0	0	1	1	1	1	3	2	0	1	1	2	2	0	30	0	36	0
178	1897.884513	20.12626969	0	0	2	1	1	0	3	2	0	0	1	2	3	0	30	0	35	1
179	1898.87551	35.14757672	0	1	1	2	0	0	3	2	0	0	0	1	5	0	30	0	36	0
180	1898.875746	34.42932729	0	0	1	3	0	0	3	2	0	0	0	2	4	0	30	0	36	0
181	1898.875956	39.1126135	0	1	1	2	0	0	2	3	0	0	0	2	4	0	30	0	36	0
182	1898.876193	20.43378003	0	0	1	3	0	0	2	3	0	0	0	3	3	0	30	0	36	0
183	1898.87627	36.62891972	0	1	1	1	1	0	4	1	0	0	0	1	5	0	30	0	36	0
184	1898.876476	29.63468798	0	1	1	2	0	0	3	2	0	0	0	2	3	1	30	0	36	0
185	1898.876506	53.82059801	0	0	1	2	1	0	4	1	0	0	0	2	4	0	30	0	36	0
186	1898.876716	81.52213685	0	1	1	1	1	0	3	2	0	0	0	2	4	0	30	0	36	0
187	1898.876953	63.88496943	0	0	1	2	1	0	3	2	0	0	0	3	3	0	30	0	36	0
188	1898.877163	48.38332732	0	1	1	1	1	0	2	3	0	0	0	3	3	0	30	0	36	0
189	1898.877236	30.88368269	0	1	1	1	1	0	4	1	0	0	0	2	3	1	30	0	36	0
190	1898.87731	25.21682632	0	0	1	3	0	0	2	3	0	1	0	1	4	0	30	0	36	0
191	1898.8774	21.32757092	0	0	1	2	1	0	2	3	0	0	0	4	2	0	30	0	36	0
192	1898.877476	21.23949988	0	1	1	0	2	0	4	1	0	0	0	2	4	0	30	0	36	0
193	1898.877682	27.49416391	0	1	1	1	1	0	3	2	0	0	0	3	2	1	30	0	36	0
194	1898.877713	33.2887447	0	0	1	1	2	0	4	1	0	0	0	3	3	0	30	0	36	0
195	1898.877721	32.02741001	0	1	0	2	1	0	3	2	0	0	1	1	4	0	30	0	36	0
196	1898.877833	26.8278581	0	1	1	1	1	0	3	2	0	1	0	0	5	0	30	0	36	0
197	1898.877923	25.21125462	0	1	1	0	2	0	3	2	0	0	0	3	3	0	30	0	36	0
198	1898.877958	25.09833757	0	0	0	3	1	0	3	2	0	0	1	2	3	0	30	0	36	0
199	1898.878039	21.7051229	0	1	1	2	0	0	2	3	0	1	0	1	3	1	30	0	36	0
200	1898.87807	78.83887253	0	0	1	2	1	0	3	2	0	1	0	1	4	0	30	0	36	0
201	1898.87816	22.22645075	0	0	1	1	2	0	3	2	0	0	0	4	2	0	30	0	36	0
202	1898.878168	28.51236588	0	1	0	2	1	0	2	3	0	0	1	2	3	0	30	0	36	0
203	1898.87828	59.70867654	0	1	1	1	1	0	2	3	0	1	0	1	4	0	30	0	36	0
204	1898.878517	70.18621793	0	0	1	2	1	0	2	3	0	1	0	2	3	0	30	0	36	0
205	1898.878589	29.86716023	0	0	1	2	1	0	4	1	0	1	0	1	3	1	30	0	36	0
206	1898.878605	21.35247417	0	0	3	1	0	0	2	3	0	0	0	2	4	0	30	0	36	0
207	1898.878727	26.57779119	0	1	1	1	1	0	1	4	0	1	0	2	3	0	30	0	36	0
208	1898.878779	23.06811023	0	1	1	1	0	1	3	2	0	0	0	3	3	0	30	0	36	0
209	1898.878799	45.23983035	0	1	1	1	1	0	3	2	0	1	0	1	3	1	30	0	36	0
210	1898.87883	41.08082266	0	0	1	1	2	0	4	1	0	1	0	1	4	0	30	0	36	0
211	1898.878928	29.71405878	0	1	0	1	2	0	3	2	0	0	1	2	3	0	30	0	36	0
212	1898.879036	39.88380889	0	0	1	2	1	0	3	2	0	1	0	2	2	1	30	0	36	0
213	1898.87904	31.11259045	0	1	1	0	2	0	3	2	0	1	0	1	4	0	30	0	36	0
214	1898.879246	30.20603121	0	1	1	1	1	0	2	3	0	1	0	2	2	1	30	0	36	0
215	1898.879277	73.14431269	0	0	1	1	2	0	3	2	0	1	0	2	3	0	30	0	36	0
216	1898.879365	22.25240359	0	0	3	0	1	0	3	2	0	0	0	2	4	0	30	0	36	0
217	1898.879487	27.69794878	0	1	1	0	2	0	2	3	0	1	0	2	3	0	30	0	36	0

218	1898.87961	25.16608881	0	0	2	2	0	0	2	3	0	0	1	1	4	0	30	0	36	0
219	1898.879724	32.55832121	0	0	1	1	2	0	2	3	0	1	0	3	2	0	30	0	36	0
220	1898.879796	20.78238345	0	0	1	1	2	0	4	1	0	1	0	2	2	1	30	0	36	0
221	1898.879896	28.46778856	0	1	1	1	0	1	3	2	0	1	0	1	4	0	30	0	36	0
222	1898.880133	33.46325069	0	0	1	2	0	1	3	2	0	1	0	2	3	0	30	0	36	0
223	1898.880282	28.73603396	0	0	0	2	2	0	3	2	0	1	1	1	3	0	30	0	36	0
224	1898.880343	25.34341687	0	1	1	1	0	1	2	3	0	1	0	2	3	0	30	0	36	0
225	1898.88037	52.45349651	0	0	2	1	1	0	3	2	0	0	1	1	4	0	30	0	36	0
226	1898.880492	21.76325589	0	1	0	1	2	0	2	3	0	1	1	1	3	0	30	0	36	0
227	1898.880817	46.6966665	0	0	2	1	1	0	2	3	0	0	1	2	3	0	30	0	36	0
228	1898.88084	26.78628331	0	0	1	1	2	0	2	3	0	2	0	1	3	0	30	0	36	0
229	1898.880893	34.87360545	0	0	1	1	1	1	4	1	0	1	0	2	3	0	30	0	36	0
230	1898.881103	26.41155005	0	1	1	0	1	1	3	2	0	1	0	2	3	0	30	0	36	0
231	1898.881336	26.53570711	0	0	2	1	1	0	3	2	0	0	1	2	2	1	30	0	36	0
232	1898.88134	31.04618818	0	0	1	1	1	1	3	2	0	1	0	3	2	0	30	0	36	0
233	1898.881577	24.33238089	0	0	2	0	2	0	3	2	0	0	1	2	3	0	30	0	36	0
234	1898.881908	20.90001881	0	0	2	1	1	0	3	2	0	0	0	3	3	0	30	0	35	1
235	1898.882108	20.752487	0	1	0	1	1	1	3	2	0	1	1	1	3	0	30	0	36	0
236	1898.882433	22.26394731	0	0	2	1	0	1	3	2	0	0	1	2	3	0	30	0	36	0
237	1898.882456	25.54222581	0	0	1	1	1	1	3	2	0	2	0	1	3	0	30	0	36	0
238	1898.882676	20.95558557	0	1	1	1	1	0	3	2	0	0	1	1	4	0	30	0	35	1
239	1898.882913	24.63282359	0	0	1	2	1	0	3	2	0	0	1	2	3	0	30	0	35	1
240	1898.883025	25.79220016	0	0	2	1	1	0	3	2	0	1	0	1	4	0	30	0	35	1
241	1898.883472	22.9614773	0	0	2	1	1	0	2	3	0	1	0	2	3	0	30	0	35	1
242	1899.87467	22.41532414	0	1	0	2	1	0	4	1	0	0	0	1	5	0	30	0	36	0
243	1899.874906	21.95726143	0	0	0	3	1	0	4	1	0	0	0	2	4	0	30	0	36	0
244	1899.875116	49.88804299	0	1	0	2	1	0	3	2	0	0	0	2	4	0	30	0	36	0
245	1899.875353	26.06323652	0	0	0	3	1	0	3	2	0	0	0	3	3	0	30	0	36	0
246	1899.875563	29.60851625	0	1	0	2	1	0	2	3	0	0	0	3	3	0	30	0	36	0
247	1899.875876	25.99532161	0	1	0	1	2	0	4	1	0	0	0	2	4	0	30	0	36	0
248	1899.876113	20.37128062	0	0	0	2	2	0	4	1	0	0	0	3	3	0	30	0	36	0
249	1899.876323	30.85640792	0	1	0	1	2	0	3	2	0	0	0	3	3	0	30	0	36	0
250	1899.87647	32.16400039	0	0	0	3	1	0	3	2	0	1	0	1	4	0	30	0	36	0
251	1899.876559	35.22645369	0	0	2	2	0	0	3	2	0	0	0	1	5	0	30	0	36	0
252	1899.87668	36.53914308	0	1	0	2	1	0	2	3	0	1	0	1	4	0	30	0	36	0
253	1899.876769	26.67877992	0	1	2	1	0	0	2	3	0	0	0	1	5	0	30	0	36	0
254	1899.876917	28.63396531	0	0	0	3	1	0	2	3	0	1	0	2	3	0	30	0	36	0
255	1899.877005	39.20038866	0	0	2	2	0	0	2	3	0	0	0	2	4	0	30	0	36	0
256	1899.877199	27.68483125	0	1	0	2	1	0	3	2	0	1	0	1	3	1	30	0	36	0
257	1899.87723	25.13969734	0	0	0	2	2	0	4	1	0	1	0	1	4	0	30	0	36	0
258	1899.877288	25.26733859	0	1	2	1	0	0	3	2	0	0	0	1	4	1	30	0	36	0
259	1899.877319	36.71112107	0	0	2	1	1	0	4	1	0	0	0	1	5	0	30	0	36	0
260	1899.87744	38.07913555	0	1	0	1	2	0	3	2	0	1	0	1	4	0	30	0	36	0
261	1899.877525	29.70119312	0	0	2	2	0	0	3	2	0	0	0	2	3	1	30	0	36	0
262	1899.877529	27.80319381	0	1	2	0	1	0	3	2	0	0	0	1	5	0	30	0	36	0

263	1899.877677	44.76117478	0	0	0	2	2	0	3	2	0	1	0	2	3	0	30	0	36	0
264	1899.877735	22.49421987	0	1	2	1	0	0	2	3	0	0	0	2	3	1	30	0	36	0
265	1899.877765	81.70508599	0	0	2	1	1	0	3	2	0	0	0	2	4	0	30	0	36	0
266	1899.877887	33.89990776	0	1	0	1	2	0	2	3	0	1	0	2	3	0	30	0	36	0
267	1899.877975	30.93970268	0	1	2	0	1	0	2	3	0	0	0	2	4	0	30	0	36	0
268	1899.87801	20.5340859	0	0	1	3	0	0	2	3	0	0	1	1	4	0	30	0	36	0
269	1899.878212	48.4919075	0	0	2	1	1	0	2	3	0	0	0	3	3	0	30	0	36	0
270	1899.878285	30.95299078	0	0	2	1	1	0	4	1	0	0	0	2	3	1	30	0	36	0
271	1899.878495	23.44226972	0	1	2	0	1	0	3	2	0	0	0	2	3	1	30	0	36	0
272	1899.878525	21.28716482	0	0	2	0	2	0	4	1	0	0	0	2	4	0	30	0	36	0
273	1899.878534	21.84595062	0	1	1	1	1	0	3	2	0	0	1	0	5	0	30	0	36	0
274	1899.878731	27.55586536	0	0	2	1	1	0	3	2	0	0	0	3	2	1	30	0	36	0
275	1899.87877	64.19856963	0	0	1	2	1	0	3	2	0	0	1	1	4	0	30	0	36	0
276	1899.878882	26.88806425	0	0	2	1	1	0	3	2	0	1	0	0	5	0	30	0	36	0
277	1899.878972	25.26783284	0	0	2	0	2	0	3	2	0	0	0	3	3	0	30	0	36	0
278	1899.87898	48.62083266	0	1	1	1	1	0	2	3	0	0	1	1	4	0	30	0	36	0
279	1899.879088	21.75383278	0	0	2	2	0	0	2	3	0	1	0	1	3	1	30	0	36	0
280	1899.879217	57.15270468	0	0	1	2	1	0	2	3	0	0	1	2	3	0	30	0	36	0
281	1899.879289	24.32085726	0	0	1	2	1	0	4	1	0	0	1	1	3	1	30	0	36	0
282	1899.879293	21.34114727	0	0	0	2	1	1	4	1	0	1	0	2	3	0	30	0	36	0
283	1899.879329	59.84267267	0	0	2	1	1	0	2	3	0	1	0	1	4	0	30	0	36	0
284	1899.879427	21.6423209	0	1	1	1	1	0	1	4	0	0	1	2	3	0	30	0	36	0
285	1899.879499	36.83883731	0	1	1	1	1	0	3	2	0	0	1	1	3	1	30	0	36	0
286	1899.879503	32.32546632	0	1	0	1	1	1	3	2	0	1	0	2	3	0	30	0	36	0
287	1899.87953	33.45215335	0	0	1	1	2	0	4	1	0	0	1	1	4	0	30	0	36	0
288	1899.879736	32.47742389	0	0	1	2	1	0	3	2	0	0	1	2	2	1	30	0	36	0
289	1899.87974	25.33501228	0	1	1	0	2	0	3	2	0	0	1	1	4	0	30	0	36	0
290	1899.879776	26.63743615	0	0	2	1	1	0	1	4	0	1	0	2	3	0	30	0	36	0
291	1899.879828	23.11987888	0	0	2	1	0	1	3	2	0	0	0	3	3	0	30	0	36	0
292	1899.879848	45.341356	0	0	2	1	1	0	3	2	0	1	0	1	3	1	30	0	36	0
293	1899.879861	21.55000689	0	0	1	2	1	0	4	1	0	0	0	2	4	0	30	0	35	1
294	1899.879946	24.59680023	0	1	1	1	1	0	2	3	0	0	1	2	2	1	30	0	36	0
295	1899.879977	59.56148408	0	0	1	1	2	0	3	2	0	0	1	2	3	0	30	0	36	0
296	1899.880071	32.64182628	0	1	1	1	1	0	3	2	0	0	0	2	4	0	30	0	35	1
297	1899.880089	31.18241224	0	0	2	0	2	0	3	2	0	1	0	1	4	0	30	0	36	0
298	1899.880187	22.5544663	0	1	1	0	2	0	2	3	0	0	1	2	3	0	30	0	36	0
299	1899.880295	30.27381853	0	0	2	1	1	0	2	3	0	1	0	2	2	1	30	0	36	0
300	1899.880308	25.57982598	0	0	1	2	1	0	3	2	0	0	0	3	3	0	30	0	35	1
301	1899.880334	23.51024995	0	0	1	2	1	0	2	3	0	1	1	0	4	0	30	0	36	0
302	1899.880424	26.51227223	0	0	1	1	2	0	2	3	0	0	1	3	2	0	30	0	36	0
303	1899.880536	27.76010756	0	0	2	0	2	0	2	3	0	1	0	2	3	0	30	0	36	0
304	1899.880596	23.18134757	0	1	1	1	0	1	3	2	0	0	1	1	4	0	30	0	36	0
305	1899.880781	20.92997368	0	0	1	2	1	0	1	4	0	1	1	1	3	0	30	0	36	0
306	1899.880833	27.24915718	0	0	1	2	0	1	3	2	0	0	1	2	3	0	30	0	36	0
307	1899.880945	28.53167498	0	0	2	1	0	1	3	2	0	1	0	1	4	0	30	0	36	0

308	1899.881043	20.6371687	0	1	1	1	0	1	2	3	0	0	1	2	3	0	30	0	36	0
309	1899.881094	24.5011218	0	0	1	1	2	0	3	2	0	1	1	0	4	0	30	0	36	0
310	1899.8813	23.78720766	0	0	1	2	1	0	2	3	0	1	1	1	2	1	30	0	36	0
311	1899.881392	25.40029168	0	0	2	1	0	1	2	3	0	1	0	2	3	0	30	0	36	0
312	1899.881425	31.56743531	0	0	1	2	1	0	3	2	0	1	0	1	4	0	30	0	35	1
313	1899.881541	43.62419245	0	0	1	1	2	0	2	3	0	1	1	1	3	0	30	0	36	0
314	1899.881593	28.39761042	0	0	1	1	1	1	4	1	0	0	1	2	3	0	30	0	36	0
315	1899.881635	23.90761973	0	1	1	1	1	0	2	3	0	1	0	1	4	0	30	0	35	1
316	1899.881803	21.50695057	0	1	1	0	1	1	3	2	0	0	1	2	3	0	30	0	36	0
317	1899.881872	28.10287391	0	0	1	2	1	0	2	3	0	1	0	2	3	0	30	0	35	1
318	1899.88204	25.28094085	0	0	1	1	1	1	3	2	0	0	1	3	2	0	30	0	36	0
319	1899.88206	24.78975226	0	0	1	1	2	0	3	2	0	1	1	1	2	1	30	0	36	0
320	1899.882152	26.47082193	0	0	2	0	1	1	3	2	0	1	0	2	3	0	30	0	36	0
321	1899.882632	29.28730821	0	0	1	1	2	0	3	2	0	1	0	2	3	0	30	0	35	1
322	1899.883157	41.59811802	0	0	1	1	1	1	3	2	0	1	1	1	3	0	30	0	36	0
323	1899.883603	27.77450847	0	0	1	1	1	1	2	3	0	1	1	2	2	0	30	0	36	0
324	1899.883725	21.00261337	0	0	2	1	1	0	3	2	0	0	1	1	4	0	30	0	35	1
325	1900.874959	28.74276696	0	0	1	3	0	0	3	2	0	0	0	1	5	0	30	0	36	0
326	1900.875169	32.6525327	0	1	1	2	0	0	2	3	0	0	0	1	5	0	30	0	36	0
327	1900.875405	31.9852701	0	0	1	3	0	0	2	3	0	0	0	2	4	0	30	0	36	0
328	1900.875688	30.92504987	0	1	1	2	0	0	3	2	0	0	0	1	4	1	30	0	36	0
329	1900.875719	44.93125565	0	0	1	2	1	0	4	1	0	0	0	1	5	0	30	0	36	0
330	1900.875925	24.23447105	0	0	1	3	0	0	3	2	0	0	0	2	3	1	30	0	36	0
331	1900.875929	68.05743726	0	1	1	1	1	0	3	2	0	0	0	1	5	0	30	0	36	0
332	1900.876135	27.53099099	0	1	1	2	0	0	2	3	0	0	0	2	3	1	30	0	36	0
333	1900.876165	100	0	0	1	2	1	0	3	2	0	0	0	2	4	0	30	0	36	0
334	1900.876375	75.73507158	0	1	1	1	1	0	2	3	0	0	0	2	4	0	30	0	36	0
335	1900.876448	32.22842866	0	1	1	1	1	0	4	1	0	0	0	1	4	1	30	0	36	0
336	1900.876612	59.3499253	0	0	1	2	1	0	2	3	0	0	0	3	3	0	30	0	36	0
337	1900.876685	37.88379928	0	0	1	2	1	0	4	1	0	0	0	2	3	1	30	0	36	0
338	1900.876822	22.4743542	0	1	1	1	1	0	1	4	0	0	0	3	3	0	30	0	36	0
339	1900.876895	57.382645	0	1	1	1	1	0	3	2	0	0	0	2	3	1	30	0	36	0
340	1900.876925	52.10731882	0	0	1	1	2	0	4	1	0	0	0	2	4	0	30	0	36	0
341	1900.877131	33.72600986	0	0	1	2	1	0	3	2	0	0	0	3	2	1	30	0	36	0
342	1900.877135	39.4635152	0	1	1	0	2	0	3	2	0	0	0	2	4	0	30	0	36	0
343	1900.87717	26.19117641	0	0	0	3	1	0	3	2	0	0	1	1	4	0	30	0	36	0
344	1900.877282	32.90867872	0	0	1	2	1	0	3	2	0	1	0	0	5	0	30	0	36	0
345	1900.877341	25.54241771	0	1	1	1	1	0	2	3	0	0	0	3	2	1	30	0	36	0
346	1900.877372	61.85130959	0	0	1	1	2	0	3	2	0	0	0	3	3	0	30	0	36	0
347	1900.87738	29.7538593	0	1	0	2	1	0	2	3	0	0	1	1	4	0	30	0	36	0
348	1900.877492	24.92341139	0	1	1	1	1	0	2	3	0	1	0	0	5	0	30	0	36	0
349	1900.877582	23.42156679	0	1	1	0	2	0	2	3	0	0	0	3	3	0	30	0	36	0
350	1900.877617	23.31666545	0	0	0	3	1	0	2	3	0	0	1	2	3	0	30	0	36	0
351	1900.877729	73.2422859	0	0	1	2	1	0	2	3	0	1	0	1	4	0	30	0	36	0
352	1900.877781	23.83890433	0	0	1	2	0	1	4	1	0	0	0	2	4	0	30	0	36	0

353	1900.877819	20.64864715	0	0	1	1	2	0	2	3	0	0	0	4	2	0	30	0	36	0
354	1900.877899	22.54378467	0	1	0	2	1	0	3	2	0	0	1	1	3	1	30	0	36	0
355	1900.87793	20.47127969	0	0	0	2	2	0	4	1	0	0	1	1	4	0	30	0	36	0
356	1900.877939	27.73504882	0	1	1	1	1	0	1	4	0	1	0	1	4	0	30	0	36	0
357	1900.877991	36.10882252	0	1	1	1	0	1	3	2	0	0	0	2	4	0	30	0	36	0
358	1900.878011	23.60483786	0	1	1	1	1	0	3	2	0	1	0	0	4	1	30	0	36	0
359	1900.87814	31.00787666	0	1	0	1	2	0	3	2	0	0	1	1	4	0	30	0	36	0
360	1900.878176	32.60193148	0	0	1	2	1	0	1	4	0	1	0	2	3	0	30	0	36	0
361	1900.878228	28.29674383	0	0	1	2	0	1	3	2	0	0	0	3	3	0	30	0	36	0
362	1900.878248	55.49392116	0	0	1	2	1	0	3	2	0	1	0	1	3	1	30	0	36	0
363	1900.878377	36.44906762	0	0	0	2	2	0	3	2	0	0	1	2	3	0	30	0	36	0
364	1900.878438	21.43055919	0	1	1	1	0	1	2	3	0	0	0	3	3	0	30	0	36	0
365	1900.878458	42.02836091	0	1	1	1	1	0	2	3	0	1	0	1	3	1	30	0	36	0
366	1900.878489	76.32918284	0	0	1	1	2	0	3	2	0	1	0	1	4	0	30	0	36	0
367	1900.878587	27.60472745	0	1	0	1	2	0	2	3	0	0	1	2	3	0	30	0	36	0
368	1900.878695	37.05255085	0	0	1	2	1	0	2	3	0	1	0	2	2	1	30	0	36	0
369	1900.878699	28.90398063	0	1	1	0	2	0	2	3	0	1	0	1	4	0	30	0	36	0
370	1900.878936	67.9519695	0	0	1	1	2	0	2	3	0	1	0	2	3	0	30	0	36	0
371	1900.878988	29.48934904	0	0	1	1	1	1	4	1	0	0	0	3	3	0	30	0	36	0
372	1900.879008	28.91639442	0	0	1	1	2	0	4	1	0	1	0	1	3	1	30	0	36	0
373	1900.879024	20.67275765	0	0	3	0	1	0	2	3	0	0	0	2	4	0	30	0	36	0
374	1900.879198	22.3337796	0	1	1	0	1	1	3	2	0	0	0	3	3	0	30	0	36	0
375	1900.879218	21.89985201	0	1	1	0	2	0	3	2	0	1	0	1	3	1	30	0	36	0
376	1900.879345	34.92031693	0	0	1	2	0	1	3	2	0	1	0	1	4	0	30	0	36	0
377	1900.879455	38.6141816	0	0	1	1	2	0	3	2	0	1	0	2	2	1	30	0	36	0
378	1900.879555	26.44692702	0	1	1	1	0	1	2	3	0	1	0	1	4	0	30	0	36	0
379	1900.879583	21.89497654	0	0	2	1	1	0	3	2	0	0	1	0	5	0	30	0	36	0
380	1900.879696	23.60529959	0	0	1	0	3	0	3	2	0	1	0	2	3	0	30	0	36	0
381	1900.879792	31.08777302	0	0	1	2	0	1	2	3	0	1	0	2	3	0	30	0	36	0
382	1900.879941	26.69613031	0	0	0	2	2	0	2	3	0	1	1	1	3	0	30	0	36	0
383	1900.880029	48.72994584	0	0	2	1	1	0	2	3	0	0	1	1	4	0	30	0	36	0
384	1900.880074	20.0382015	0	1	1	1	0	1	3	2	0	1	0	1	3	1	30	0	36	0
385	1900.880105	36.39208175	0	0	1	1	1	1	4	1	0	1	0	1	4	0	30	0	36	0
386	1900.880203	26.32265827	0	1	0	1	1	1	3	2	0	0	1	2	3	0	30	0	36	0
387	1900.880315	27.56156916	0	1	1	0	1	1	3	2	0	1	0	1	4	0	30	0	36	0
388	1900.880476	21.69088984	0	0	2	1	1	0	1	4	0	0	1	2	3	0	30	0	36	0
389	1900.880548	36.92150974	0	0	2	1	1	0	3	2	0	0	1	1	3	1	30	0	36	0
390	1900.880552	64.79602001	0	0	1	1	1	1	3	2	0	1	0	2	3	0	30	0	36	0
391	1900.880762	24.53665607	0	1	1	0	1	1	2	3	0	1	0	2	3	0	30	0	36	0
392	1900.880789	25.39186824	0	0	2	0	2	0	3	2	0	0	1	1	4	0	30	0	36	0
393	1900.880995	24.65199951	0	0	2	1	1	0	2	3	0	0	1	2	2	1	30	0	36	0
394	1900.880999	28.8422921	0	0	1	1	1	1	2	3	0	1	0	3	2	0	30	0	36	0
395	1900.88112	32.71507993	0	0	2	1	1	0	3	2	0	0	0	2	4	0	30	0	35	1
396	1900.881236	22.60508225	0	0	2	0	2	0	2	3	0	0	1	2	3	0	30	0	36	0
397	1900.881557	25.45625986	0	0	0	2	1	1	3	2	0	1	1	1	3	0	30	0	36	0

398	1900.881645	23.23337034	0	0	2	1	0	1	3	2	0	0	1	1	4	0	30	0	36	0
399	1900.882092	20.68348191	0	0	2	1	0	1	2	3	0	0	1	2	3	0	30	0	36	0
400	1900.882115	23.72904311	0	0	1	1	1	1	2	3	0	2	0	1	3	0	30	0	36	0
401	1900.882125	25.70539289	0	0	1	2	1	0	3	2	0	0	1	1	4	0	30	0	35	1
402	1900.882572	22.88419722	0	0	1	2	1	0	2	3	0	0	1	2	3	0	30	0	35	1
403	1900.882684	23.96127237	0	0	2	1	1	0	2	3	0	1	0	1	4	0	30	0	35	1
404	1900.882852	21.55521572	0	0	2	0	1	1	3	2	0	0	1	2	3	0	30	0	36	0
405	1900.883332	23.84868321	0	0	1	1	2	0	3	2	0	0	1	2	3	0	30	0	35	1
406	1901.874329	41.64822571	0	1	0	2	1	0	3	2	0	0	0	1	5	0	30	0	36	0
407	1901.874565	40.7971339	0	0	0	3	1	0	3	2	0	0	0	2	4	0	30	0	36	0
408	1901.874775	46.34660784	0	1	0	2	1	0	2	3	0	0	0	2	4	0	30	0	36	0
409	1901.875012	24.2130685	0	0	0	3	1	0	2	3	0	0	0	3	3	0	30	0	36	0
410	1901.875089	21.70177375	0	1	0	1	2	0	4	1	0	0	0	1	5	0	30	0	36	0
411	1901.875295	35.11571178	0	1	0	2	1	0	3	2	0	0	0	2	3	1	30	0	36	0
412	1901.875325	31.88743894	0	0	0	2	2	0	4	1	0	0	0	2	4	0	30	0	36	0
413	1901.875535	48.29994942	0	1	0	1	2	0	3	2	0	0	0	2	4	0	30	0	36	0
414	1901.875772	37.85034239	0	0	0	2	2	0	3	2	0	0	0	3	3	0	30	0	36	0
415	1901.875982	28.6659839	0	1	0	1	2	0	2	3	0	0	0	3	3	0	30	0	36	0
416	1901.876129	29.88075345	0	0	0	3	1	0	2	3	0	1	0	1	4	0	30	0	36	0
417	1901.876218	32.72581037	0	0	2	2	0	0	2	3	0	0	0	1	5	0	30	0	36	0
418	1901.876391	22.09704701	0	1	0	2	0	1	3	2	0	0	0	2	4	0	30	0	36	0
419	1901.876648	22.63992932	0	0	0	3	1	0	3	2	0	1	0	1	3	1	30	0	36	0
420	1901.876737	30.99445079	0	0	2	2	0	0	3	2	0	0	0	1	4	1	30	0	36	0
421	1901.876858	25.71955002	0	1	0	2	1	0	2	3	0	1	0	1	3	1	30	0	36	0
422	1901.876889	46.71017839	0	0	0	2	2	0	3	2	0	1	0	1	4	0	30	0	36	0
423	1901.876947	23.47366949	0	1	2	1	0	0	2	3	0	0	0	1	4	1	30	0	36	0
424	1901.876978	68.21016939	0	0	2	1	1	0	3	2	0	0	0	1	5	0	30	0	36	0
425	1901.877099	35.37598704	0	1	0	1	2	0	2	3	0	1	0	1	4	0	30	0	36	0
426	1901.877151	23.02835747	0	1	0	1	1	1	4	1	0	0	0	2	4	0	30	0	36	0
427	1901.877184	27.59277509	0	0	2	2	0	0	2	3	0	0	0	2	3	1	30	0	36	0
428	1901.877188	25.8295103	0	1	2	0	1	0	2	3	0	0	0	1	5	0	30	0	36	0
429	1901.877336	41.58368398	0	0	0	2	2	0	2	3	0	1	0	2	3	0	30	0	36	0
430	1901.877424	75.90503359	0	0	2	1	1	0	2	3	0	0	0	2	4	0	30	0	36	0
431	1901.877497	32.30075458	0	0	2	1	1	0	4	1	0	0	0	1	4	1	30	0	36	0
432	1901.877598	27.33462591	0	1	0	1	1	1	3	2	0	0	0	3	3	0	30	0	36	0
433	1901.877618	26.80353585	0	1	0	1	2	0	3	2	0	1	0	1	3	1	30	0	36	0
434	1901.877707	24.4629996	0	1	2	0	1	0	3	2	0	0	0	1	4	1	30	0	36	0
435	1901.877855	23.63021906	0	0	0	2	2	0	3	2	0	1	0	2	2	1	30	0	36	0
436	1901.877871	22.52479037	0	0	2	1	1	0	1	4	0	0	0	3	3	0	30	0	36	0
437	1901.877944	57.51142114	0	0	2	1	1	0	3	2	0	0	0	2	3	1	30	0	36	0
438	1901.877983	26.79756869	0	0	1	2	1	0	3	2	0	0	1	0	5	0	30	0	36	0
439	1901.878096	28.89085705	0	0	0	1	3	0	3	2	0	1	0	2	3	0	30	0	36	0
440	1901.878154	21.77815798	0	1	2	0	1	0	2	3	0	0	0	2	3	1	30	0	36	0
441	1901.878184	39.55207785	0	0	2	0	2	0	3	2	0	0	0	2	4	0	30	0	36	0
442	1901.878193	20.29515783	0	1	1	1	1	0	2	3	0	0	1	0	5	0	30	0	36	0

443	1901.87839	25.59973911	0	0	2	1	1	0	2	3	0	0	0	3	2	1	30	0	36	0
444	1901.878429	59.64126376	0	0	1	2	1	0	2	3	0	0	1	1	4	0	30	0	36	0
445	1901.878505	22.27038948	0	0	0	2	1	1	4	1	0	1	0	1	4	0	30	0	36	0
446	1901.878541	24.97934364	0	0	2	1	1	0	2	3	0	1	0	0	5	0	30	0	36	0
447	1901.878631	23.47412866	0	0	2	0	2	0	2	3	0	0	0	3	3	0	30	0	36	0
448	1901.878639	22.5846769	0	1	1	1	1	0	1	4	0	0	1	1	4	0	30	0	36	0
449	1901.878715	33.73299083	0	1	0	1	1	1	3	2	0	1	0	1	4	0	30	0	36	0
450	1901.878876	26.54778412	0	0	1	2	1	0	1	4	0	0	1	2	3	0	30	0	36	0
451	1901.878948	45.1887533	0	0	1	2	1	0	3	2	0	0	1	1	3	1	30	0	36	0
452	1901.878952	39.65237857	0	0	0	2	1	1	3	2	0	1	0	2	3	0	30	0	36	0
453	1901.878988	27.79729086	0	0	2	1	1	0	1	4	0	1	0	1	4	0	30	0	36	0
454	1901.87904	36.18985668	0	0	2	1	0	1	3	2	0	0	0	2	4	0	30	0	36	0
455	1901.87906	23.65781101	0	0	2	1	1	0	3	2	0	1	0	0	4	1	30	0	36	0
456	1901.879158	34.22373466	0	1	1	1	1	0	2	3	0	0	1	1	3	1	30	0	36	0
457	1901.879162	30.03075729	0	1	0	1	1	1	2	3	0	1	0	2	3	0	30	0	36	0
458	1901.879189	62.1549269	0	0	1	1	2	0	3	2	0	0	1	1	4	0	30	0	36	0
459	1901.879284	27.25050066	0	1	1	1	1	0	3	2	0	0	0	1	5	0	30	0	35	1
460	1901.879395	30.17192775	0	0	1	2	1	0	2	3	0	0	1	2	2	1	30	0	36	0
461	1901.879399	23.53653919	0	1	1	0	2	0	2	3	0	0	1	1	4	0	30	0	36	0
462	1901.879487	21.47865291	0	0	2	1	0	1	2	3	0	0	0	3	3	0	30	0	36	0
463	1901.879507	42.12267949	0	0	2	1	1	0	2	3	0	1	0	1	3	1	30	0	36	0
464	1901.87952	40.04044489	0	0	1	2	1	0	3	2	0	0	0	2	4	0	30	0	35	1
465	1901.879636	55.33335403	0	0	1	1	2	0	2	3	0	0	1	2	3	0	30	0	36	0
466	1901.879708	23.54664775	0	0	1	1	2	0	4	1	0	0	1	1	3	1	30	0	36	0
467	1901.879712	20.66179132	0	0	0	1	2	1	4	1	0	1	0	2	3	0	30	0	36	0
468	1901.87973	30.3246596	0	1	1	1	1	0	2	3	0	0	0	2	4	0	30	0	35	1
469	1901.879748	28.96884594	0	0	2	0	2	0	2	3	0	1	0	1	4	0	30	0	36	0
470	1901.879967	23.76397414	0	0	1	2	1	0	2	3	0	0	0	3	3	0	30	0	35	1
471	1901.880045	28.43564762	0	0	1	2	0	1	3	2	0	0	1	1	4	0	30	0	36	0
472	1901.880155	31.44356517	0	0	1	1	2	0	3	2	0	0	1	2	2	1	30	0	36	0
473	1901.880247	22.3839003	0	0	2	0	1	1	3	2	0	0	0	3	3	0	30	0	36	0
474	1901.88025	22.97626635	0	1	1	1	1	0	3	2	0	0	0	2	3	1	30	0	35	1
475	1901.880255	21.53575808	0	1	1	1	0	1	2	3	0	0	1	1	4	0	30	0	36	0
476	1901.880267	21.9489989	0	0	2	0	2	0	3	2	0	1	0	1	3	1	30	0	36	0
477	1901.88028	20.86400228	0	0	1	1	2	0	4	1	0	0	0	2	4	0	30	0	35	1
478	1901.880492	25.31480343	0	0	1	2	0	1	2	3	0	0	1	2	3	0	30	0	36	0
479	1901.880604	26.5062783	0	0	2	1	0	1	2	3	0	1	0	1	4	0	30	0	36	0
480	1901.880727	24.76553953	0	0	1	1	2	0	3	2	0	0	0	3	3	0	30	0	35	1
481	1901.880753	22.76184463	0	0	1	1	2	0	2	3	0	1	1	0	4	0	30	0	36	0
482	1901.880805	29.63410713	0	0	1	1	1	1	4	1	0	0	1	1	4	0	30	0	36	0
483	1901.881015	22.44341224	0	1	1	0	1	1	3	2	0	0	1	1	4	0	30	0	36	0
484	1901.881084	29.32653712	0	0	1	2	1	0	2	3	0	1	0	1	4	0	30	0	35	1
485	1901.881123	20.08317053	0	0	2	1	0	1	3	2	0	1	0	1	3	1	30	0	36	0
486	1901.8812	20.26370668	0	0	1	1	2	0	1	4	0	1	1	1	3	0	30	0	36	0
487	1901.881252	52.76346133	0	0	1	1	1	1	3	2	0	0	1	2	3	0	30	0	36	0

488	1901.881364	27.62342188	0	0	2	0	1	1	3	2	0	1	0	1	4	0	30	0	36	0
489	1901.881603	22.22001292	0	0	1	2	1	0	3	2	0	1	0	1	3	1	30	0	35	1
490	1901.881699	23.48630616	0	0	1	1	1	1	2	3	0	0	1	3	2	0	30	0	36	0
491	1901.881719	23.0299859	0	0	1	1	2	0	2	3	0	1	1	1	2	1	30	0	36	0
492	1901.881811	24.59172037	0	0	2	0	1	1	2	3	0	1	0	2	3	0	30	0	36	0
493	1901.881844	30.56254439	0	0	1	1	2	0	3	2	0	1	0	1	4	0	30	0	35	1
494	1901.882291	27.2082709	0	0	1	1	2	0	2	3	0	1	0	2	3	0	30	0	35	1
495	1901.882369	21.70469746	0	0	1	1	1	1	3	2	0	1	1	0	4	0	30	0	36	0
496	1901.882816	38.6451652	0	0	1	1	1	1	2	3	0	1	1	1	3	0	30	0	36	0
497	1901.883335	21.96038522	0	0	1	1	1	1	3	2	0	1	1	1	2	1	30	0	36	0
498	1901.883576	20.13695944	0	0	1	0	2	1	3	2	0	1	1	1	3	0	30	0	36	0
499	1901.883907	25.94461468	0	0	1	1	1	1	3	2	0	1	0	2	3	0	30	0	35	1
500	1902.874618	26.70238536	0	0	1	3	0	0	2	3	0	0	0	1	5	0	30	0	36	0
501	1902.875137	25.28969518	0	0	1	3	0	0	3	2	0	0	0	1	4	1	30	0	36	0
502	1902.875141	23.67360442	0	1	1	1	1	0	3	2	0	0	0	0	6	0	30	0	36	0
503	1902.875347	28.72975312	0	1	1	2	0	0	2	3	0	0	0	1	4	1	30	0	36	0
504	1902.875378	83.48338241	0	0	1	2	1	0	3	2	0	0	0	1	5	0	30	0	36	0
505	1902.875584	22.5141228	0	0	1	3	0	0	2	3	0	0	0	2	3	1	30	0	36	0
506	1902.875588	63.22619943	0	1	1	1	1	0	2	3	0	0	0	1	5	0	30	0	36	0
507	1902.875824	92.90123457	0	0	1	2	1	0	2	3	0	0	0	2	4	0	30	0	36	0
508	1902.875897	39.53334629	0	0	1	2	1	0	4	1	0	0	0	1	4	1	30	0	36	0
509	1902.876034	35.17940825	0	1	1	1	1	0	1	4	0	0	0	2	4	0	30	0	36	0
510	1902.876107	59.88121621	0	1	1	1	1	0	3	2	0	0	0	1	4	1	30	0	36	0
511	1902.876138	43.50095223	0	0	1	1	2	0	4	1	0	0	0	1	5	0	30	0	36	0
512	1902.876271	27.56840666	0	0	1	2	1	0	1	4	0	0	0	3	3	0	30	0	36	0
513	1902.876344	70.38903447	0	0	1	2	1	0	3	2	0	0	0	2	3	1	30	0	36	0
514	1902.876348	32.94547731	0	1	1	0	2	0	3	2	0	0	0	1	5	0	30	0	36	0
515	1902.876554	53.30918564	0	1	1	1	1	0	2	3	0	0	0	2	3	1	30	0	36	0
516	1902.876584	96.81668496	0	0	1	1	2	0	3	2	0	0	0	2	4	0	30	0	36	0
517	1902.87679	31.33187953	0	0	1	2	1	0	2	3	0	0	0	3	2	1	30	0	36	0
518	1902.876794	36.66209283	0	1	1	0	2	0	2	3	0	0	0	2	4	0	30	0	36	0
519	1902.876829	24.33192624	0	0	0	3	1	0	2	3	0	0	1	1	4	0	30	0	36	0
520	1902.876941	30.57256881	0	0	1	2	1	0	2	3	0	1	0	0	5	0	30	0	36	0
521	1902.877031	57.4606302	0	0	1	1	2	0	2	3	0	0	0	3	3	0	30	0	36	0
522	1902.877104	36.6778386	0	0	1	1	2	0	4	1	0	0	0	2	3	1	30	0	36	0
523	1902.877204	30.14486639	0	1	1	1	0	1	3	2	0	0	0	1	5	0	30	0	36	0
524	1902.877314	27.77798732	0	1	1	0	2	0	3	2	0	0	0	2	3	1	30	0	36	0
525	1902.877388	34.02149391	0	0	1	2	1	0	1	4	0	1	0	1	4	0	30	0	36	0
526	1902.87744	44.29327286	0	0	1	2	0	1	3	2	0	0	0	2	4	0	30	0	36	0
527	1902.87746	28.95512651	0	0	1	2	1	0	3	2	0	1	0	0	4	1	30	0	36	0
528	1902.87755	32.65240472	0	0	1	1	2	0	3	2	0	0	0	3	2	1	30	0	36	0
529	1902.877558	20.94345428	0	1	0	2	1	0	2	3	0	0	1	1	3	1	30	0	36	0
530	1902.877589	38.03614313	0	0	0	2	2	0	3	2	0	0	1	1	4	0	30	0	36	0
531	1902.87765	33.54554191	0	1	1	1	0	1	2	3	0	0	0	2	4	0	30	0	36	0
532	1902.87767	21.92918579	0	1	1	1	1	0	2	3	0	1	0	0	4	1	30	0	36	0

533	1902.877701	31.8610918	0	0	1	1	2	0	3	2	0	1	0	0	5	0	30	0	36	0
534	1902.877799	28.80670023	0	1	0	1	2	0	2	3	0	0	1	1	4	0	30	0	36	0
535	1902.877887	26.28802436	0	0	1	2	0	1	2	3	0	0	0	3	3	0	30	0	36	0
536	1902.877907	51.55453787	0	0	1	2	1	0	2	3	0	1	0	1	3	1	30	0	36	0
537	1902.878036	33.86163381	0	0	0	2	2	0	2	3	0	0	1	2	3	0	30	0	36	0
538	1902.878148	70.9107532	0	0	1	1	2	0	2	3	0	1	0	1	4	0	30	0	36	0
539	1902.87817	25.41665153	0	1	1	1	0	1	3	2	0	0	0	2	3	1	30	0	36	0
540	1902.8782	46.16007381	0	0	1	1	1	1	4	1	0	0	0	2	4	0	30	0	36	0
541	1902.878318	21.82614499	0	1	0	1	2	0	3	2	0	0	1	1	3	1	30	0	36	0
542	1902.87841	34.95936494	0	1	1	0	1	1	3	2	0	0	0	2	4	0	30	0	36	0
543	1902.878595	31.56410929	0	0	1	1	2	0	1	4	0	1	0	2	3	0	30	0	36	0
544	1902.878647	54.79193865	0	0	1	1	1	1	3	2	0	0	0	3	3	0	30	0	36	0
545	1902.878667	53.72737482	0	0	1	1	2	0	3	2	0	1	0	1	3	1	30	0	36	0
546	1902.878796	23.52585264	0	0	0	1	3	0	3	2	0	0	1	2	3	0	30	0	36	0
547	1902.878857	20.74835698	0	1	1	0	1	1	2	3	0	0	0	3	3	0	30	0	36	0
548	1902.878877	20.34523289	0	1	1	0	2	0	2	3	0	1	0	1	3	1	30	0	36	0
549	1902.878908	24.63312816	0	0	1	0	3	0	3	2	0	1	0	1	4	0	30	0	36	0
550	1902.879004	32.44140555	0	0	1	2	0	1	2	3	0	1	0	1	4	0	30	0	36	0
551	1902.879114	35.87305143	0	0	1	1	2	0	2	3	0	1	0	2	2	1	30	0	36	0
552	1902.879242	20.34070352	0	0	2	1	1	0	2	3	0	0	1	0	5	0	30	0	36	0
553	1902.879355	21.92961475	0	0	1	0	3	0	2	3	0	1	0	2	3	0	30	0	36	0
554	1902.879415	27.46880683	0	1	0	1	1	1	3	2	0	0	1	1	4	0	30	0	36	0
555	1902.879523	24.58007392	0	0	1	2	0	1	3	2	0	1	0	1	3	1	30	0	36	0
556	1902.879652	32.28896995	0	0	0	2	1	1	3	2	0	0	1	2	3	0	30	0	36	0
557	1902.879688	22.63536064	0	0	2	1	1	0	1	4	0	0	1	1	4	0	30	0	36	0
558	1902.879764	67.61738646	0	0	1	1	1	1	3	2	0	1	0	1	4	0	30	0	36	0
559	1902.879862	24.45407451	0	1	0	1	1	1	2	3	0	0	1	2	3	0	30	0	36	0
560	1902.879974	25.60503802	0	1	1	0	1	1	2	3	0	1	0	1	4	0	30	0	36	0
561	1902.880207	34.30053837	0	0	2	1	1	0	2	3	0	0	1	1	3	1	30	0	36	0
562	1902.880211	60.19630254	0	0	1	1	1	1	2	3	0	1	0	2	3	0	30	0	36	0
563	1902.880283	25.61603497	0	0	1	1	1	1	4	1	0	1	0	1	3	1	30	0	36	0
564	1902.880333	27.31165529	0	0	2	1	1	0	3	2	0	0	0	1	5	0	30	0	35	1
565	1902.880448	23.58935907	0	0	2	0	2	0	2	3	0	0	1	1	4	0	30	0	36	0
566	1902.88073	34.20696964	0	0	1	1	1	1	3	2	0	1	0	2	2	1	30	0	36	0
567	1902.880779	30.39271314	0	0	2	1	1	0	2	3	0	0	0	2	4	0	30	0	35	1
568	1902.880971	31.36667928	0	0	1	0	2	1	3	2	0	1	0	2	3	0	30	0	36	0
569	1902.881216	23.64917969	0	0	0	2	1	1	2	3	0	1	1	1	3	0	30	0	36	0
570	1902.881299	23.02782889	0	0	2	1	1	0	3	2	0	0	0	2	3	1	30	0	35	1
571	1902.881304	21.58408788	0	0	2	1	0	1	2	3	0	0	1	1	4	0	30	0	36	0
572	1902.881784	23.88062735	0	0	1	2	1	0	2	3	0	0	1	1	4	0	30	0	35	1
573	1902.881976	24.64590691	0	0	0	1	2	1	3	2	0	1	1	1	3	0	30	0	36	0
574	1902.882064	22.49377897	0	0	2	0	1	1	3	2	0	0	1	1	4	0	30	0	36	0
575	1902.882511	20.02506152	0	0	2	0	1	1	2	3	0	0	1	2	3	0	30	0	36	0
576	1902.882544	24.88710926	0	0	1	1	2	0	3	2	0	0	1	1	4	0	30	0	35	1
577	1902.882991	22.15572113	0	0	1	1	2	0	2	3	0	0	1	2	3	0	30	0	35	1

578	1902.884607	21.12672466	0	0	1	1	1	1	3	2	0	0	1	2	3	0	30	0	35	1
579	1903.873778	34.05882731	0	0	0	3	1	0	3	2	0	0	0	1	5	0	30	0	36	0
580	1903.873988	38.69171586	0	1	0	2	1	0	2	3	0	0	0	1	5	0	30	0	36	0
581	1903.874224	37.90104106	0	0	0	3	1	0	2	3	0	0	0	2	4	0	30	0	36	0
582	1903.874434	21.52828543	0	1	0	2	1	0	1	4	0	0	0	2	4	0	30	0	36	0
583	1903.874507	36.64472994	0	1	0	2	1	0	3	2	0	0	0	1	4	1	30	0	36	0
584	1903.874538	26.6207126	0	0	0	2	2	0	4	1	0	0	0	1	5	0	30	0	36	0
585	1903.874744	28.71670864	0	0	0	3	1	0	3	2	0	0	0	2	3	1	30	0	36	0
586	1903.874748	40.32243148	0	1	0	1	2	0	3	2	0	0	0	1	5	0	30	0	36	0
587	1903.874954	32.62292977	0	1	0	2	1	0	2	3	0	0	0	2	3	1	30	0	36	0
588	1903.874984	59.2476489	0	0	0	2	2	0	3	2	0	0	0	2	4	0	30	0	36	0
589	1903.875194	44.8712493	0	1	0	1	2	0	2	3	0	0	0	2	4	0	30	0	36	0
590	1903.875431	35.16343537	0	0	0	2	2	0	2	3	0	0	0	3	3	0	30	0	36	0
591	1903.875504	22.44526039	0	0	0	2	2	0	4	1	0	0	0	2	3	1	30	0	36	0
592	1903.875714	33.99786804	0	1	0	1	2	0	3	2	0	0	0	2	3	1	30	0	36	0
593	1903.875744	20.5815742	0	0	0	1	3	0	4	1	0	0	0	2	4	0	30	0	36	0
594	1903.87605	20.52842947	0	1	0	2	0	1	2	3	0	0	0	2	4	0	30	0	36	0
595	1903.87619	23.7267319	0	0	2	1	1	0	3	2	0	0	0	0	6	0	30	0	36	0
596	1903.876191	24.43029783	0	0	0	1	3	0	3	2	0	0	0	3	3	0	30	0	36	0
597	1903.876307	21.03277385	0	0	0	3	1	0	2	3	0	1	0	1	3	1	30	0	36	0
598	1903.876396	28.79422743	0	0	2	2	0	0	2	3	0	0	0	1	4	1	30	0	36	0
599	1903.876548	43.3943324	0	0	0	2	2	0	2	3	0	1	0	1	4	0	30	0	36	0
600	1903.8766	28.24798068	0	0	0	2	1	1	4	1	0	0	0	2	4	0	30	0	36	0
601	1903.876637	63.36808946	0	0	2	1	1	0	2	3	0	0	0	1	5	0	30	0	36	0
602	1903.87681	42.78725678	0	1	0	1	1	1	3	2	0	0	0	2	4	0	30	0	36	0
603	1903.877047	33.53031087	0	0	0	2	1	1	3	2	0	0	0	3	3	0	30	0	36	0
604	1903.877067	32.87884357	0	0	0	2	2	0	3	2	0	1	0	1	3	1	30	0	36	0
605	1903.877083	35.25835665	0	0	2	1	1	0	1	4	0	0	0	2	4	0	30	0	36	0
606	1903.877156	60.01559955	0	0	2	1	1	0	3	2	0	0	0	1	4	1	30	0	36	0
607	1903.877257	25.39420494	0	1	0	1	1	1	2	3	0	0	0	3	3	0	30	0	36	0
608	1903.877277	24.90081571	0	1	0	1	2	0	2	3	0	1	0	1	3	1	30	0	36	0
609	1903.877308	30.14883084	0	0	0	1	3	0	3	2	0	1	0	1	4	0	30	0	36	0
610	1903.877366	22.72642864	0	1	2	0	1	0	2	3	0	0	0	1	4	1	30	0	36	0
611	1903.877397	33.0194124	0	0	2	0	2	0	3	2	0	0	0	1	5	0	30	0	36	0
612	1903.877514	21.95276524	0	0	0	2	2	0	2	3	0	1	0	2	2	1	30	0	36	0
613	1903.877603	53.42882025	0	0	2	1	1	0	2	3	0	0	0	2	3	1	30	0	36	0
614	1903.877642	24.89527215	0	0	1	2	1	0	2	3	0	0	1	0	5	0	30	0	36	0
615	1903.877755	26.83996288	0	0	0	1	3	0	2	3	0	1	0	2	3	0	30	0	36	0
616	1903.877843	36.74436862	0	0	2	0	2	0	2	3	0	0	0	2	4	0	30	0	36	0
617	1903.878088	27.70373517	0	0	1	2	1	0	1	4	0	0	1	1	4	0	30	0	36	0
618	1903.878161	23.57818733	0	0	1	2	1	0	3	2	0	0	1	0	4	1	30	0	36	0
619	1903.878164	41.37893354	0	0	0	2	1	1	3	2	0	1	0	1	4	0	30	0	36	0
620	1903.878253	30.21251645	0	0	2	1	0	1	3	2	0	0	0	1	5	0	30	0	36	0
621	1903.878363	27.84032571	0	0	2	0	2	0	3	2	0	0	0	2	3	1	30	0	36	0
622	1903.878374	31.33836494	0	1	0	1	1	1	2	3	0	1	0	1	4	0	30	0	36	0

623	1903.878402	25.94451766	0	0	1	1	2	0	3	2	0	0	1	0	5	0	30	0	36	0
624	1903.878607	41.9809097	0	0	1	2	1	0	2	3	0	0	1	1	3	1	30	0	36	0
625	1903.878611	36.83754922	0	0	0	2	1	1	2	3	0	1	0	2	3	0	30	0	36	0
626	1903.878699	33.62082364	0	0	2	1	0	1	2	3	0	0	0	2	4	0	30	0	36	0
627	1903.878719	21.9783985	0	0	2	1	1	0	2	3	0	1	0	0	4	1	30	0	36	0
628	1903.878733	33.42711773	0	0	1	2	1	0	3	2	0	0	0	1	5	0	30	0	35	1
629	1903.878848	57.74269444	0	0	1	1	2	0	2	3	0	0	1	1	4	0	30	0	36	0
630	1903.878893	23.74432654	0	1	0	1	1	1	3	2	0	1	0	1	3	1	30	0	36	0
631	1903.878924	21.56145282	0	0	0	1	2	1	4	1	0	1	0	1	4	0	30	0	36	0
632	1903.878943	25.31605154	0	1	1	1	1	0	2	3	0	0	0	1	5	0	30	0	35	1
633	1903.87913	20.93319481	0	0	0	2	1	1	3	2	0	1	0	2	2	1	30	0	36	0
634	1903.879179	37.19806763	0	0	1	2	1	0	2	3	0	0	0	2	4	0	30	0	35	1
635	1903.879219	25.47369069	0	0	2	1	0	1	3	2	0	0	0	2	3	1	30	0	36	0
636	1903.879295	25.70268451	0	0	1	1	2	0	1	4	0	0	1	2	3	0	30	0	36	0
637	1903.879367	43.75025292	0	0	1	1	2	0	3	2	0	0	1	1	3	1	30	0	36	0
638	1903.879371	38.39011844	0	0	0	1	2	1	3	2	0	1	0	2	3	0	30	0	36	0
639	1903.879459	35.03781953	0	0	2	0	1	1	3	2	0	0	0	2	4	0	30	0	36	0
640	1903.879462	23.97670538	0	1	1	1	1	0	3	2	0	0	0	1	4	1	30	0	35	1
641	1903.879608	20.05877992	0	0	1	0	3	0	3	2	0	0	1	1	4	0	30	0	36	0
642	1903.879699	28.18408256	0	0	1	2	1	0	3	2	0	0	0	2	3	1	30	0	35	1
643	1903.879704	26.4170677	0	0	1	2	0	1	2	3	0	0	1	1	4	0	30	0	36	0
644	1903.879814	29.21146023	0	0	1	1	2	0	2	3	0	0	1	2	2	1	30	0	36	0
645	1903.879906	20.79491972	0	0	2	0	1	1	2	3	0	0	0	3	3	0	30	0	36	0
646	1903.879909	21.3452351	0	1	1	1	1	0	2	3	0	0	0	2	3	1	30	0	35	1
647	1903.879926	20.39089095	0	0	2	0	2	0	2	3	0	1	0	1	3	1	30	0	36	0
648	1903.879939	38.76583139	0	0	1	1	2	0	3	2	0	0	0	2	4	0	30	0	35	1
649	1903.880223	20.0155778	0	0	1	2	0	1	3	2	0	0	1	1	3	1	30	0	36	0
650	1903.880386	23.00749197	0	0	1	1	2	0	2	3	0	0	0	3	3	0	30	0	35	1
651	1903.880464	55.06090275	0	0	1	1	1	1	3	2	0	0	1	1	4	0	30	0	36	0
652	1903.880674	20.85020705	0	1	1	0	1	1	2	3	0	0	1	1	4	0	30	0	36	0
653	1903.880911	49.01790697	0	0	1	1	1	1	2	3	0	0	1	2	3	0	30	0	36	0
654	1903.880983	20.85916188	0	0	1	1	1	1	4	1	0	0	1	1	3	1	30	0	36	0
655	1903.881023	25.66249995	0	0	2	0	1	1	2	3	0	1	0	1	4	0	30	0	36	0
656	1903.881262	20.64266632	0	0	1	2	1	0	2	3	0	1	0	1	3	1	30	0	35	1
657	1903.88143	27.85476824	0	0	1	1	1	1	3	2	0	0	1	2	2	1	30	0	36	0
658	1903.881503	28.39298106	0	0	1	1	2	0	2	3	0	1	0	1	4	0	30	0	35	1
659	1903.881671	25.54191706	0	0	1	0	2	1	3	2	0	0	1	2	3	0	30	0	36	0
660	1903.882002	21.938936	0	0	1	1	1	1	3	2	0	0	0	3	3	0	30	0	35	1
661	1903.882022	21.51267991	0	0	1	1	2	0	3	2	0	1	0	1	3	1	30	0	35	1
662	1903.882028	20.1639319	0	0	1	1	1	1	2	3	0	1	1	0	4	0	30	0	36	0
663	1903.882994	20.40146899	0	0	1	1	1	1	2	3	0	1	1	1	2	1	30	0	36	0
664	1903.883119	27.07430237	0	0	1	1	1	1	3	2	0	1	0	1	4	0	30	0	35	1
665	1903.883566	24.10286735	0	0	1	1	1	1	2	3	0	1	0	2	3	0	30	0	35	1
666	1904.87459	29.03947975	0	0	1	2	1	0	3	2	0	0	0	0	6	0	30	0	36	0
667	1904.874796	23.49443904	0	0	1	3	0	0	2	3	0	0	0	1	4	1	30	0	36	0

668	1904.8748	21.99307077	0	1	1	1	1	0	2	3	0	0	0	0	6	0	30	0	36	0
669	1904.875037	77.55709292	0	0	1	2	1	0	2	3	0	0	0	1	5	0	30	0	36	0
670	1904.875247	29.36895992	0	1	1	1	1	0	1	4	0	0	0	1	5	0	30	0	36	0
671	1904.875319	24.99543236	0	1	1	1	1	0	3	2	0	0	0	0	5	1	30	0	36	0
672	1904.875483	43.15319692	0	0	1	2	1	0	1	4	0	0	0	2	4	0	30	0	36	0
673	1904.875556	73.45393353	0	0	1	2	1	0	3	2	0	0	0	1	4	1	30	0	36	0
674	1904.875766	55.63038913	0	1	1	1	1	0	2	3	0	0	0	1	4	1	30	0	36	0
675	1904.875797	80.82584335	0	0	1	1	2	0	3	2	0	0	0	1	5	0	30	0	36	0
676	1904.876003	65.39228202	0	0	1	2	1	0	2	3	0	0	0	2	3	1	30	0	36	0
677	1904.876007	30.60675516	0	1	1	0	2	0	2	3	0	0	0	1	5	0	30	0	36	0
678	1904.876213	24.7624458	0	1	1	1	1	0	1	4	0	0	0	2	3	1	30	0	36	0
679	1904.876243	89.9438956	0	0	1	1	2	0	2	3	0	0	0	2	4	0	30	0	36	0
680	1904.876285	21.07490496	0	1	1	1	1	0	3	2	0	0	0	1	3	2	30	0	36	0
681	1904.876316	38.27487533	0	0	1	1	2	0	4	1	0	0	0	1	4	1	30	0	36	0
682	1904.876526	28.98750423	0	1	1	0	2	0	3	2	0	0	0	1	4	1	30	0	36	0
683	1904.876653	36.97752237	0	0	1	2	0	1	3	2	0	0	0	1	5	0	30	0	36	0
684	1904.87669	26.69081743	0	0	1	1	2	0	1	4	0	0	0	3	3	0	30	0	36	0
685	1904.876763	68.14832975	0	0	1	1	2	0	3	2	0	0	0	2	3	1	30	0	36	0
686	1904.876863	28.00495303	0	1	1	1	0	1	2	3	0	0	0	1	5	0	30	0	36	0
687	1904.876973	25.80609316	0	1	1	0	2	0	2	3	0	0	0	2	3	1	30	0	36	0
688	1904.877003	31.24490162	0	0	1	0	3	0	3	2	0	0	0	2	4	0	30	0	36	0
689	1904.877099	41.14899732	0	0	1	2	0	1	2	3	0	0	0	2	4	0	30	0	36	0
690	1904.877119	26.89967	0	0	1	2	1	0	2	3	0	1	0	0	4	1	30	0	36	0
691	1904.877209	30.3344871	0	0	1	1	2	0	2	3	0	0	0	3	2	1	30	0	36	0
692	1904.877248	35.33604655	0	0	0	2	2	0	2	3	0	0	1	1	4	0	30	0	36	0
693	1904.87736	29.59934763	0	0	1	1	2	0	2	3	0	1	0	0	5	0	30	0	36	0
694	1904.877382	26.52335049	0	1	1	1	0	1	3	2	0	0	0	1	4	1	30	0	36	0
695	1904.877413	38.53599094	0	0	1	1	1	1	4	1	0	0	0	1	5	0	30	0	36	0
696	1904.877566	23.94740108	0	0	1	2	1	0	1	4	0	1	0	1	3	1	30	0	36	0
697	1904.877619	31.1776071	0	0	1	2	0	1	3	2	0	0	0	2	3	1	30	0	36	0
698	1904.877623	29.18526032	0	1	1	0	1	1	3	2	0	0	0	1	5	0	30	0	36	0
699	1904.877767	26.7732739	0	0	0	2	2	0	3	2	0	0	1	1	3	1	30	0	36	0
700	1904.877807	32.93848258	0	0	1	1	2	0	1	4	0	1	0	1	4	0	30	0	36	0
701	1904.877829	23.61238306	0	1	1	1	0	1	2	3	0	0	0	2	3	1	30	0	36	0
702	1904.877859	85.7665569	0	0	1	1	1	1	3	2	0	0	0	2	4	0	30	0	36	0
703	1904.877879	28.03339361	0	0	1	1	2	0	3	2	0	1	0	0	4	1	30	0	36	0
704	1904.877977	20.27675815	0	1	0	1	2	0	2	3	0	0	1	1	3	1	30	0	36	0
705	1904.878008	24.55022191	0	0	0	1	3	0	3	2	0	0	1	1	4	0	30	0	36	0
706	1904.878069	32.47768163	0	1	1	0	1	1	2	3	0	0	0	2	4	0	30	0	36	0
707	1904.878306	50.90238745	0	0	1	1	1	1	2	3	0	0	0	3	3	0	30	0	36	0
708	1904.878326	49.91339451	0	0	1	1	2	0	2	3	0	1	0	1	3	1	30	0	36	0
709	1904.878339	23.72302221	0	0	0	2	2	0	3	2	0	0	0	2	4	0	30	0	35	1
710	1904.878379	32.49163027	0	0	1	1	1	1	4	1	0	0	0	2	3	1	30	0	36	0
711	1904.878455	21.85580755	0	0	0	1	3	0	2	3	0	0	1	2	3	0	30	0	36	0
712	1904.878567	22.88448018	0	0	1	0	3	0	2	3	0	1	0	1	4	0	30	0	36	0

713	1904.878589	24.60755944	0	1	1	0	1	1	3	2	0	0	0	2	3	1	30	0	36	0
714	1904.878619	22.34532662	0	0	1	0	2	1	4	1	0	0	0	2	4	0	30	0	36	0
715	1904.878825	28.92563744	0	0	1	1	1	1	3	2	0	0	0	3	2	1	30	0	36	0
716	1904.878864	33.69490533	0	0	0	2	1	1	3	2	0	0	1	1	4	0	30	0	36	0
717	1904.878976	28.22464066	0	0	1	1	1	1	3	2	0	1	0	0	5	0	30	0	36	0
718	1904.879066	26.52386932	0	0	1	0	2	1	3	2	0	0	0	3	3	0	30	0	36	0
719	1904.879074	25.51886067	0	1	0	1	1	1	2	3	0	0	1	1	4	0	30	0	36	0
720	1904.879182	22.83519213	0	0	1	2	0	1	2	3	0	1	0	1	3	1	30	0	36	0
721	1904.879311	29.99685172	0	0	0	2	1	1	2	3	0	0	1	2	3	0	30	0	36	0
722	1904.879423	62.81738681	0	0	1	1	1	1	2	3	0	1	0	1	4	0	30	0	36	0
723	1904.87987	27.96155411	0	0	1	1	1	1	1	4	0	1	0	2	3	0	30	0	36	0
724	1904.879942	47.59522547	0	0	1	1	1	1	3	2	0	1	0	1	3	1	30	0	36	0
725	1904.879992	25.37286494	0	0	2	1	1	0	2	3	0	0	0	1	5	0	30	0	35	1
726	1904.880071	31.26111032	0	0	0	1	2	1	3	2	0	0	1	2	3	0	30	0	36	0
727	1904.880183	32.73245602	0	0	1	0	2	1	3	2	0	1	0	1	4	0	30	0	36	0
728	1904.880389	31.77869711	0	0	1	1	1	1	2	3	0	1	0	2	2	1	30	0	36	0
729	1904.880511	24.03051307	0	0	2	1	1	0	3	2	0	0	0	1	4	1	30	0	35	1
730	1904.88063	29.14003229	0	0	1	0	2	1	2	3	0	1	0	2	3	0	30	0	36	0
731	1904.880958	21.39313733	0	0	2	1	1	0	2	3	0	0	0	2	3	1	30	0	35	1
732	1904.881635	22.89635179	0	0	0	1	2	1	2	3	0	1	1	1	3	0	30	0	36	0
733	1904.881723	20.89699836	0	0	2	0	1	1	2	3	0	0	1	1	4	0	30	0	36	0
734	1904.882203	23.12043175	0	0	1	1	2	0	2	3	0	0	1	1	4	0	30	0	35	1
735	1904.883819	22.04663042	0	0	1	1	1	1	3	2	0	0	1	1	4	0	30	0	35	1
736	1905.873437	31.64107105	0	0	0	3	1	0	2	3	0	0	0	1	5	0	30	0	36	0
737	1905.873956	29.96709962	0	0	0	3	1	0	3	2	0	0	0	1	4	1	30	0	36	0
738	1905.874166	34.04340652	0	1	0	2	1	0	2	3	0	0	0	1	4	1	30	0	36	0
739	1905.874197	49.46194131	0	0	0	2	2	0	3	2	0	0	0	1	5	0	30	0	36	0
740	1905.874403	26.67817686	0	0	0	3	1	0	2	3	0	0	0	2	3	1	30	0	36	0
741	1905.874407	37.46003665	0	1	0	1	2	0	2	3	0	0	0	1	5	0	30	0	36	0
742	1905.874643	55.04179728	0	0	0	2	2	0	2	3	0	0	0	2	4	0	30	0	36	0
743	1905.874716	23.42257821	0	0	0	2	2	0	4	1	0	0	0	1	4	1	30	0	36	0
744	1905.874853	20.84297228	0	1	0	1	2	0	1	4	0	0	0	2	4	0	30	0	36	0
745	1905.874926	35.47821274	0	1	0	1	2	0	3	2	0	0	0	1	4	1	30	0	36	0
746	1905.875163	41.70384801	0	0	0	2	2	0	3	2	0	0	0	2	3	1	30	0	36	0
747	1905.875373	31.58443914	0	1	0	1	2	0	2	3	0	0	0	2	3	1	30	0	36	0
748	1905.875403	38.24107306	0	0	0	1	3	0	3	2	0	0	0	2	4	0	30	0	36	0
749	1905.875813	23.58236974	0	0	0	2	1	1	4	1	0	0	0	1	5	0	30	0	36	0
750	1905.875849	22.04242686	0	0	2	1	1	0	2	3	0	0	0	0	6	0	30	0	36	0
751	1905.87585	22.69604829	0	0	0	1	3	0	2	3	0	0	0	3	3	0	30	0	36	0
752	1905.876023	35.7202492	0	1	0	1	1	1	3	2	0	0	0	1	5	0	30	0	36	0
753	1905.876207	20.15693526	0	0	0	2	2	0	1	4	0	1	0	1	4	0	30	0	36	0
754	1905.876259	52.48544559	0	0	0	2	1	1	3	2	0	0	0	2	4	0	30	0	36	0
755	1905.876296	29.43486872	0	0	2	1	1	0	1	4	0	0	0	1	5	0	30	0	36	0
756	1905.876368	25.05152624	0	0	2	1	1	0	3	2	0	0	0	0	5	1	30	0	36	0
757	1905.876469	39.74988978	0	1	0	1	1	1	2	3	0	0	0	2	4	0	30	0	36	0

758	1905.876706	31.15007275	0	0	0	2	1	1	2	3	0	0	0	3	3	0	30	0	36	0
759	1905.876726	30.54485159	0	0	0	2	2	0	2	3	0	1	0	1	3	1	30	0	36	0
760	1905.876815	55.75523292	0	0	2	1	1	0	2	3	0	0	0	1	4	1	30	0	36	0
761	1905.876967	28.00863606	0	0	0	1	3	0	2	3	0	1	0	1	4	0	30	0	36	0
762	1905.876989	30.11753692	0	1	0	1	1	1	3	2	0	0	0	2	3	1	30	0	36	0
763	1905.877019	27.34875847	0	0	0	1	2	1	4	1	0	0	0	2	4	0	30	0	36	0
764	1905.877056	30.67544177	0	0	2	0	2	0	2	3	0	0	0	1	5	0	30	0	36	0
765	1905.877229	20.7126018	0	1	0	0	2	1	3	2	0	0	0	2	4	0	30	0	36	0
766	1905.877262	24.81801682	0	0	2	1	1	0	1	4	0	0	0	2	3	1	30	0	36	0
767	1905.877334	21.12220053	0	0	2	1	1	0	3	2	0	0	0	1	3	2	30	0	36	0
768	1905.877466	32.46293544	0	0	0	1	2	1	3	2	0	0	0	3	3	0	30	0	36	0
769	1905.877486	21.22147093	0	0	0	1	3	0	3	2	0	1	0	1	3	1	30	0	36	0
770	1905.877575	29.05255697	0	0	2	0	2	0	3	2	0	0	0	1	4	1	30	0	36	0
771	1905.87782	21.90442712	0	0	1	2	1	0	2	3	0	0	1	0	4	1	30	0	36	0
772	1905.877823	38.44154011	0	0	0	2	1	1	2	3	0	1	0	1	4	0	30	0	36	0
773	1905.877912	28.06780077	0	0	2	1	0	1	2	3	0	0	0	1	5	0	30	0	36	0
774	1905.878022	25.86400629	0	0	2	0	2	0	2	3	0	0	0	2	3	1	30	0	36	0
775	1905.878061	24.10277721	0	0	1	1	2	0	2	3	0	0	1	0	5	0	30	0	36	0
776	1905.878342	29.1262318	0	0	0	2	1	1	3	2	0	1	0	1	3	1	30	0	36	0
777	1905.878392	31.05420505	0	0	1	2	1	0	2	3	0	0	0	1	5	0	30	0	35	1
778	1905.878431	26.58287327	0	0	2	1	0	1	3	2	0	0	0	1	4	1	30	0	36	0
779	1905.878507	26.821838	0	0	1	1	2	0	1	4	0	0	1	1	4	0	30	0	36	0
780	1905.878552	22.0587725	0	1	0	1	1	1	2	3	0	1	0	1	3	1	30	0	36	0
781	1905.87858	22.82761935	0	0	1	1	2	0	3	2	0	0	1	0	4	1	30	0	36	0
782	1905.878583	40.06171173	0	0	0	1	2	1	3	2	0	1	0	1	4	0	30	0	36	0
783	1905.878672	29.25075687	0	0	2	0	1	1	3	2	0	0	0	1	5	0	30	0	36	0
784	1905.878878	23.66537314	0	0	2	1	0	1	2	3	0	0	0	2	3	1	30	0	36	0
785	1905.878911	29.41128178	0	0	1	2	1	0	3	2	0	0	0	1	4	1	30	0	35	1
786	1905.879026	40.64452509	0	0	1	1	2	0	2	3	0	0	1	1	3	1	30	0	36	0
787	1905.87903	35.66489398	0	0	0	1	2	1	2	3	0	1	0	2	3	0	30	0	36	0
788	1905.879118	32.55056691	0	0	2	0	1	1	2	3	0	0	0	2	4	0	30	0	36	0
789	1905.879121	22.27465531	0	1	1	1	1	0	2	3	0	0	0	1	4	1	30	0	35	1
790	1905.879152	32.36302727	0	0	1	1	2	0	3	2	0	0	0	1	5	0	30	0	35	1
791	1905.879358	26.18336065	0	0	1	2	1	0	2	3	0	0	0	2	3	1	30	0	35	1
792	1905.879549	20.26682527	0	0	0	1	2	1	3	2	0	1	0	2	2	1	30	0	36	0
793	1905.879598	36.01393595	0	0	1	1	2	0	2	3	0	0	0	2	4	0	30	0	35	1
794	1905.879638	24.66278287	0	0	2	0	1	1	3	2	0	0	0	2	3	1	30	0	36	0
795	1905.879677	22.983352	0	0	1	1	1	1	3	2	0	0	1	0	5	0	30	0	36	0
796	1905.880118	27.28689442	0	0	1	1	2	0	3	2	0	0	0	2	3	1	30	0	35	1
797	1905.880123	51.15225841	0	0	1	1	1	1	2	3	0	0	1	1	4	0	30	0	36	0
798	1905.88057	22.76912037	0	0	1	1	1	1	1	4	0	0	1	2	3	0	30	0	36	0
799	1905.880642	38.75683781	0	0	1	1	1	1	3	2	0	0	1	1	3	1	30	0	36	0
800	1905.880883	26.65407037	0	0	1	0	2	1	3	2	0	0	1	1	4	0	30	0	36	0
801	1905.881089	25.87742358	0	0	1	1	1	1	2	3	0	0	1	2	2	1	30	0	36	0
802	1905.881214	34.34131095	0	0	1	1	1	1	3	2	0	0	0	2	4	0	30	0	35	1

803	1905.88133	23.72875629	0	0	1	0	2	1	2	3	0	0	1	2	3	0	30	0	36	0
804	1905.881661	20.3815424	0	0	1	1	1	1	2	3	0	0	0	3	3	0	30	0	35	1
805	1905.882778	25.15236115	0	0	1	1	1	1	2	3	0	1	0	1	4	0	30	0	35	1
806	1906.874249	26.9780352	0	0	1	2	1	0	2	3	0	0	0	0	6	0	30	0	36	0
807	1906.874696	36.02574841	0	0	1	2	1	0	1	4	0	0	0	1	5	0	30	0	36	0
808	1906.874768	30.66091411	0	0	1	2	1	0	3	2	0	0	0	0	5	1	30	0	36	0
809	1906.874978	23.22106525	0	1	1	1	1	0	2	3	0	0	0	0	5	1	30	0	36	0
810	1906.875009	28.11506162	0	0	1	1	2	0	3	2	0	0	0	0	6	0	30	0	36	0
811	1906.875215	68.23961109	0	0	1	2	1	0	2	3	0	0	0	1	4	1	30	0	36	0
812	1906.875425	25.84065915	0	1	1	1	1	0	1	4	0	0	0	1	4	1	30	0	36	0
813	1906.875456	75.08820632	0	0	1	1	2	0	2	3	0	0	0	1	5	0	30	0	36	0
814	1906.875662	30.37511866	0	0	1	2	1	0	1	4	0	0	0	2	3	1	30	0	36	0
815	1906.875734	25.8517573	0	0	1	2	1	0	3	2	0	0	0	1	3	2	30	0	36	0
816	1906.875902	41.77949471	0	0	1	1	2	0	1	4	0	0	0	2	4	0	30	0	36	0
817	1906.875975	71.11566342	0	0	1	1	2	0	3	2	0	0	0	1	4	1	30	0	36	0
818	1906.876185	26.9297493	0	1	1	0	2	0	2	3	0	0	0	1	4	1	30	0	36	0
819	1906.876216	26.08430071	0	0	1	0	3	0	3	2	0	0	0	1	5	0	30	0	36	0
820	1906.876312	34.35257479	0	0	1	2	0	1	2	3	0	0	0	1	5	0	30	0	36	0
821	1906.876422	63.31063967	0	0	1	1	2	0	2	3	0	0	0	2	3	1	30	0	36	0
822	1906.876662	29.02689935	0	0	1	0	3	0	2	3	0	0	0	2	4	0	30	0	36	0
823	1906.876831	32.53515121	0	0	1	2	0	1	3	2	0	0	0	1	4	1	30	0	36	0
824	1906.877041	24.64052005	0	1	1	1	0	1	2	3	0	0	0	1	4	1	30	0	36	0
825	1906.877072	71.60082268	0	0	1	1	1	1	3	2	0	0	0	1	5	0	30	0	36	0
826	1906.877182	21.99298457	0	0	1	0	3	0	3	2	0	0	0	2	3	1	30	0	36	0
827	1906.877278	28.96438191	0	0	1	2	0	1	2	3	0	0	0	2	3	1	30	0	36	0
828	1906.877282	27.11346715	0	1	1	0	1	1	2	3	0	0	0	1	5	0	30	0	36	0
829	1906.877426	24.87270199	0	0	0	2	2	0	2	3	0	0	1	1	3	1	30	0	36	0
830	1906.877518	79.6781902	0	0	1	1	1	1	2	3	0	0	0	2	4	0	30	0	36	0
831	1906.877538	26.04336876	0	0	1	1	2	0	2	3	0	1	0	0	4	1	30	0	36	0
832	1906.877591	33.90638993	0	0	1	1	1	1	4	1	0	0	0	1	4	1	30	0	36	0
833	1906.877667	22.80745925	0	0	0	1	3	0	2	3	0	0	1	1	4	0	30	0	36	0
834	1906.877801	25.67902869	0	1	1	0	1	1	3	2	0	0	0	1	4	1	30	0	36	0
835	1906.877965	23.64447318	0	0	1	1	1	1	1	4	0	0	0	3	3	0	30	0	36	0
836	1906.877985	23.18507986	0	0	1	1	2	0	1	4	0	1	0	1	3	1	30	0	36	0
837	1906.877998	22.03898051	0	0	0	2	2	0	2	3	0	0	0	2	4	0	30	0	35	1
838	1906.878038	60.3702513	0	0	1	1	1	1	3	2	0	0	0	2	3	1	30	0	36	0
839	1906.878248	22.86072652	0	1	1	0	1	1	2	3	0	0	0	2	3	1	30	0	36	0
840	1906.878278	41.5181686	0	0	1	0	2	1	3	2	0	0	0	2	4	0	30	0	36	0
841	1906.878484	26.87227429	0	0	1	1	1	1	2	3	0	0	0	3	2	1	30	0	36	0
842	1906.878523	31.30298304	0	0	0	2	1	1	2	3	0	0	1	1	4	0	30	0	36	0
843	1906.878635	26.22103963	0	0	1	1	1	1	2	3	0	1	0	0	5	0	30	0	36	0
844	1906.878725	24.64100205	0	0	1	0	2	1	2	3	0	0	0	3	3	0	30	0	36	0
845	1906.879042	23.71751853	0	0	0	2	1	1	3	2	0	0	1	1	3	1	30	0	36	0
846	1906.879082	29.17906393	0	0	1	1	1	1	1	4	0	1	0	1	4	0	30	0	36	0
847	1906.879154	24.83381505	0	0	1	1	1	1	3	2	0	1	0	0	4	1	30	0	36	0

848	1906.879283	32.62229034	0	0	0	1	2	1	3	2	0	0	1	1	4	0	30	0	36	0
849	1906.879601	44.21655205	0	0	1	1	1	1	2	3	0	1	0	1	3	1	30	0	36	0
850	1906.879614	21.01540592	0	0	0	2	1	1	3	2	0	0	0	2	4	0	30	0	35	1
851	1906.87973	29.04195742	0	0	0	1	2	1	2	3	0	0	1	2	3	0	30	0	36	0
852	1906.879842	30.40885574	0	0	1	0	2	1	2	3	0	1	0	1	4	0	30	0	36	0
853	1906.88017	22.32464331	0	0	2	1	1	0	2	3	0	0	0	1	4	1	30	0	35	1
854	1906.880361	23.04005975	0	0	1	0	2	1	3	2	0	1	0	1	3	1	30	0	36	0
855	1906.883478	20.48159184	0	0	1	1	1	1	2	3	0	0	1	1	4	0	30	0	35	1
856	1907.873615	27.83980551	0	0	0	3	1	0	2	3	0	0	0	1	4	1	30	0	36	0
857	1907.873856	45.95075411	0	0	0	2	2	0	2	3	0	0	0	1	5	0	30	0	36	0
858	1907.874302	25.5672546	0	0	0	2	2	0	1	4	0	0	0	2	4	0	30	0	36	0
859	1907.874375	43.51972864	0	0	0	2	2	0	3	2	0	0	0	1	4	1	30	0	36	0
860	1907.874585	32.95969764	0	1	0	1	2	0	2	3	0	0	0	1	4	1	30	0	36	0
861	1907.874616	31.92494126	0	0	0	1	3	0	3	2	0	0	0	1	5	0	30	0	36	0
862	1907.874822	38.74338966	0	0	0	2	2	0	2	3	0	0	0	2	3	1	30	0	36	0
863	1907.875062	35.52642898	0	0	0	1	3	0	2	3	0	0	0	2	4	0	30	0	36	0
864	1907.875472	43.81662525	0	0	0	2	1	1	3	2	0	0	0	1	5	0	30	0	36	0
865	1907.875582	26.91752221	0	0	0	1	3	0	3	2	0	0	0	2	3	1	30	0	36	0
866	1907.875682	33.1845525	0	1	0	1	1	1	2	3	0	0	0	1	5	0	30	0	36	0
867	1907.875918	48.75962692	0	0	0	2	1	1	2	3	0	0	0	2	4	0	30	0	36	0
868	1907.875991	20.74925295	0	0	0	2	1	1	4	1	0	0	0	1	4	1	30	0	36	0
869	1907.876027	23.27317716	0	0	2	1	1	0	2	3	0	0	0	0	5	1	30	0	36	0
870	1907.876201	31.42892315	0	1	0	1	1	1	3	2	0	0	0	1	4	1	30	0	36	0
871	1907.876232	22.83166862	0	0	0	1	2	1	4	1	0	0	0	1	5	0	30	0	36	0
872	1907.876438	36.94399839	0	0	0	2	1	1	3	2	0	0	0	2	3	1	30	0	36	0
873	1907.876474	25.89864986	0	0	2	1	1	0	1	4	0	0	0	1	4	1	30	0	36	0
874	1907.876648	27.97956362	0	1	0	1	1	1	2	3	0	0	0	2	3	1	30	0	36	0
875	1907.876678	50.81466851	0	0	0	1	2	1	3	2	0	0	0	2	4	0	30	0	36	0
876	1907.877125	30.1584678	0	0	0	1	2	1	2	3	0	0	0	3	3	0	30	0	36	0
877	1907.877234	26.9901841	0	0	2	0	2	0	2	3	0	0	0	1	4	1	30	0	36	0
878	1907.878001	27.05862892	0	0	0	2	1	1	2	3	0	1	0	1	3	1	30	0	36	0
879	1907.87809	24.69581745	0	0	2	1	0	1	2	3	0	0	0	1	4	1	30	0	36	0
880	1907.878239	21.2071402	0	0	1	1	2	0	2	3	0	0	1	0	4	1	30	0	36	0
881	1907.878242	37.21782479	0	0	0	1	2	1	2	3	0	1	0	1	4	0	30	0	36	0
882	1907.878331	27.17431425	0	0	2	0	1	1	2	3	0	0	0	1	5	0	30	0	36	0
883	1907.87857	27.32344387	0	0	1	2	1	0	2	3	0	0	0	1	4	1	30	0	35	1
884	1907.878761	28.19905208	0	0	0	1	2	1	3	2	0	1	0	1	3	1	30	0	36	0
885	1907.878811	30.06565187	0	0	1	1	2	0	2	3	0	0	0	1	5	0	30	0	35	1
886	1907.87885	25.73665667	0	0	2	0	1	1	3	2	0	0	0	1	4	1	30	0	36	0
887	1907.879297	22.91202976	0	0	2	0	1	1	2	3	0	0	0	2	3	1	30	0	36	0
888	1907.87933	28.47502802	0	0	1	1	2	0	3	2	0	0	0	1	4	1	30	0	35	1
889	1907.879336	21.35181775	0	0	1	1	1	1	2	3	0	0	1	0	5	0	30	0	36	0
890	1907.879777	25.34986179	0	0	1	1	2	0	2	3	0	0	0	2	3	1	30	0	35	1
891	1907.879782	23.76053979	0	0	1	1	1	1	1	4	0	0	1	1	4	0	30	0	36	0
892	1907.879855	20.22219945	0	0	1	1	1	1	3	2	0	0	1	0	4	1	30	0	36	0

893	1907.880301	36.00558081	0	0	1	1	1	1	2	3	0	0	1	1	3	1	30	0	36	0
894	1907.880427	28.66928795	0	0	1	1	1	1	3	2	0	0	0	1	5	0	30	0	35	1
895	1907.880542	24.76196044	0	0	1	0	2	1	2	3	0	0	1	1	4	0	30	0	36	0
896	1907.880873	31.90350184	0	0	1	1	1	1	2	3	0	0	0	2	4	0	30	0	35	1
897	1907.881393	24.1725172	0	0	1	1	1	1	3	2	0	0	0	2	3	1	30	0	35	1
898	1908.874427	28.48436774	0	0	1	2	1	0	2	3	0	0	0	0	5	1	30	0	36	0
899	1908.874668	26.11923935	0	0	1	1	2	0	2	3	0	0	0	0	6	0	30	0	36	0
900	1908.874874	31.69772058	0	0	1	2	1	0	1	4	0	0	0	1	4	1	30	0	36	0
901	1908.875115	34.87893534	0	0	1	1	2	0	1	4	0	0	0	1	5	0	30	0	36	0
902	1908.875187	29.68488062	0	0	1	1	2	0	3	2	0	0	0	0	5	1	30	0	36	0
903	1908.875393	24.01660169	0	0	1	2	1	0	2	3	0	0	0	1	3	2	30	0	36	0
904	1908.875634	66.06732929	0	0	1	1	2	0	2	3	0	0	0	1	4	1	30	0	36	0
905	1908.875875	24.23263739	0	0	1	0	3	0	2	3	0	0	0	1	5	0	30	0	36	0
906	1908.876081	29.40818294	0	0	1	1	2	0	1	4	0	0	0	2	3	1	30	0	36	0
907	1908.876153	25.02881442	0	0	1	1	2	0	3	2	0	0	0	1	3	2	30	0	36	0
908	1908.876284	24.90616192	0	0	1	1	1	1	3	2	0	0	0	0	6	0	30	0	36	0
909	1908.876394	22.95060927	0	0	1	0	3	0	3	2	0	0	0	1	4	1	30	0	36	0
910	1908.87649	30.22555714	0	0	1	2	0	1	2	3	0	0	0	1	4	1	30	0	36	0
911	1908.876731	66.51804823	0	0	1	1	1	1	2	3	0	0	0	1	5	0	30	0	36	0
912	1908.876841	20.43175419	0	0	1	0	3	0	2	3	0	0	0	2	3	1	30	0	36	0
913	1908.877177	37.01101119	0	0	1	1	1	1	1	4	0	0	0	2	4	0	30	0	36	0
914	1908.87725	62.99890969	0	0	1	1	1	1	3	2	0	0	0	1	4	1	30	0	36	0
915	1908.87746	23.85613467	0	1	1	0	1	1	2	3	0	0	0	1	4	1	30	0	36	0
916	1908.877491	34.66077146	0	0	1	0	2	1	3	2	0	0	0	1	5	0	30	0	36	0
917	1908.877697	56.08470877	0	0	1	1	1	1	2	3	0	0	0	2	3	1	30	0	36	0
918	1908.877937	38.5708912	0	0	1	0	2	1	2	3	0	0	0	2	4	0	30	0	36	0
919	1908.878457	29.224238	0	0	1	0	2	1	3	2	0	0	0	2	3	1	30	0	36	0
920	1908.878701	22.03386752	0	0	0	2	1	1	2	3	0	0	1	1	3	1	30	0	36	0
921	1908.878813	23.07092078	0	0	1	1	1	1	2	3	0	1	0	0	4	1	30	0	36	0
922	1908.878942	30.30651047	0	0	0	1	2	1	2	3	0	0	1	1	4	0	30	0	36	0
923	1908.87926	20.53886137	0	0	1	1	1	1	1	4	0	1	0	1	3	1	30	0	36	0
924	1908.879461	22.96251519	0	0	0	1	2	1	3	2	0	0	1	1	3	1	30	0	36	0
925	1908.88002	21.40449995	0	0	1	0	2	1	2	3	0	1	0	1	3	1	30	0	36	0
926	1908.880033	20.34641934	0	0	0	1	2	1	3	2	0	0	0	2	4	0	30	0	35	1
927	1909.873515	21.34440893	0	0	0	2	2	0	1	4	0	0	0	1	5	0	30	0	36	0
928	1909.874034	40.43036519	0	0	0	2	2	0	2	3	0	0	0	1	4	1	30	0	36	0
929	1909.874275	29.65866457	0	0	0	1	3	0	2	3	0	0	0	1	5	0	30	0	36	0
930	1909.874794	28.08957238	0	0	0	1	3	0	3	2	0	0	0	1	4	1	30	0	36	0
931	1909.875131	40.70618581	0	0	0	2	1	1	2	3	0	0	0	1	5	0	30	0	36	0
932	1909.875241	25.00671034	0	0	0	1	3	0	2	3	0	0	0	2	3	1	30	0	36	0
933	1909.875577	22.64914769	0	0	0	2	1	1	1	4	0	0	0	2	4	0	30	0	36	0
934	1909.87565	38.55262432	0	0	0	2	1	1	3	2	0	0	0	1	4	1	30	0	36	0
935	1909.87586	29.19785762	0	1	0	1	1	1	2	3	0	0	0	1	4	1	30	0	36	0
936	1909.875891	42.42180403	0	0	0	1	2	1	3	2	0	0	0	1	5	0	30	0	36	0
937	1909.876097	34.3214306	0	0	0	2	1	1	2	3	0	0	0	2	3	1	30	0	36	0

938	1909.876337	47.20745438	0	0	0	1	2	1	2	3	0	0	0	2	4	0	30	0	36	0
939	1909.87641	20.08873886	0	0	0	1	2	1	4	1	0	0	0	1	4	1	30	0	36	0
940	1909.876857	35.76795453	0	0	0	1	2	1	3	2	0	0	0	2	3	1	30	0	36	0
941	1909.877953	22.50747978	0	0	0	1	1	2	3	2	0	0	0	2	4	0	30	0	36	0
942	1909.87842	26.19726752	0	0	0	1	2	1	2	3	0	1	0	1	3	1	30	0	36	0
943	1909.878509	23.90967178	0	0	2	0	1	1	2	3	0	0	0	1	4	1	30	0	36	0
944	1909.878989	26.45365258	0	0	1	1	2	0	2	3	0	0	0	1	4	1	30	0	35	1
945	1909.880086	26.63412245	0	0	1	1	1	1	2	3	0	0	0	1	5	0	30	0	35	1
946	1909.880605	25.22504372	0	0	1	1	1	1	3	2	0	0	0	1	4	1	30	0	35	1
947	1909.881052	22.45656691	0	0	1	1	1	1	2	3	0	0	0	2	3	1	30	0	35	1
948	1910.874846	27.57762058	0	0	1	1	2	0	2	3	0	0	0	0	5	1	30	0	36	0
949	1910.875293	30.68868228	0	0	1	1	2	0	1	4	0	0	0	1	4	1	30	0	36	0
950	1910.875812	23.25207759	0	0	1	1	2	0	2	3	0	0	0	1	3	2	30	0	36	0
951	1910.875943	23.13813191	0	0	1	1	1	1	2	3	0	0	0	0	6	0	30	0	36	0
952	1910.876053	21.32139935	0	0	1	0	3	0	2	3	0	0	0	1	4	1	30	0	36	0
953	1910.87639	30.89804401	0	0	1	1	1	1	1	4	0	0	0	1	5	0	30	0	36	0
954	1910.876462	26.29681035	0	0	1	1	1	1	3	2	0	0	0	0	5	1	30	0	36	0
955	1910.876909	58.52676487	0	0	1	1	1	1	2	3	0	0	0	1	4	1	30	0	36	0
956	1910.87715	32.2002846	0	0	1	0	2	1	2	3	0	0	0	1	5	0	30	0	36	0
957	1910.877356	26.05169342	0	0	1	1	1	1	1	4	0	0	0	2	3	1	30	0	36	0
958	1910.877428	22.17216213	0	0	1	1	1	1	3	2	0	0	0	1	3	2	30	0	36	0
959	1910.877669	30.49672796	0	0	1	0	2	1	3	2	0	0	0	1	4	1	30	0	36	0
960	1910.878116	27.1496779	0	0	1	0	2	1	2	3	0	0	0	2	3	1	30	0	36	0
961	1910.87912	21.3324601	0	0	0	1	2	1	2	3	0	0	1	1	3	1	30	0	36	0
962	1911.874453	26.09555953	0	0	0	1	3	0	2	3	0	0	0	1	4	1	30	0	36	0
963	1911.875309	35.81586395	0	0	0	2	1	1	2	3	0	0	0	1	4	1	30	0	36	0
964	1911.87555	39.41037967	0	0	0	1	2	1	2	3	0	0	0	1	5	0	30	0	36	0
965	1911.875996	21.92815397	0	0	0	1	2	1	1	4	0	0	0	2	4	0	30	0	36	0
966	1911.876069	37.32537283	0	0	0	1	2	1	3	2	0	0	0	1	4	1	30	0	36	0
967	1911.876516	33.22887134	0	0	0	1	2	1	2	3	0	0	0	2	3	1	30	0	36	0
968	1911.877612	20.90972658	0	0	0	1	1	2	2	3	0	0	0	2	4	0	30	0	36	0
969	1911.880264	23.43437704	0	0	1	1	1	1	2	3	0	0	0	1	4	1	30	0	35	1
970	1912.876121	24.43006147	0	0	1	1	1	1	2	3	0	0	0	0	5	1	30	0	36	0
971	1912.876568	27.18604356	0	0	1	1	1	1	1	4	0	0	0	1	4	1	30	0	36	0
972	1912.877087	20.59821235	0	0	1	1	1	1	2	3	0	0	0	1	3	2	30	0	36	0
973	1912.877328	28.33183678	0	0	1	0	2	1	2	3	0	0	0	1	4	1	30	0	36	0
974	1913.875728	34.67573216	0	0	0	1	2	1	2	3	0	0	0	1	4	1	30	0	36	0

Supporting information 9.

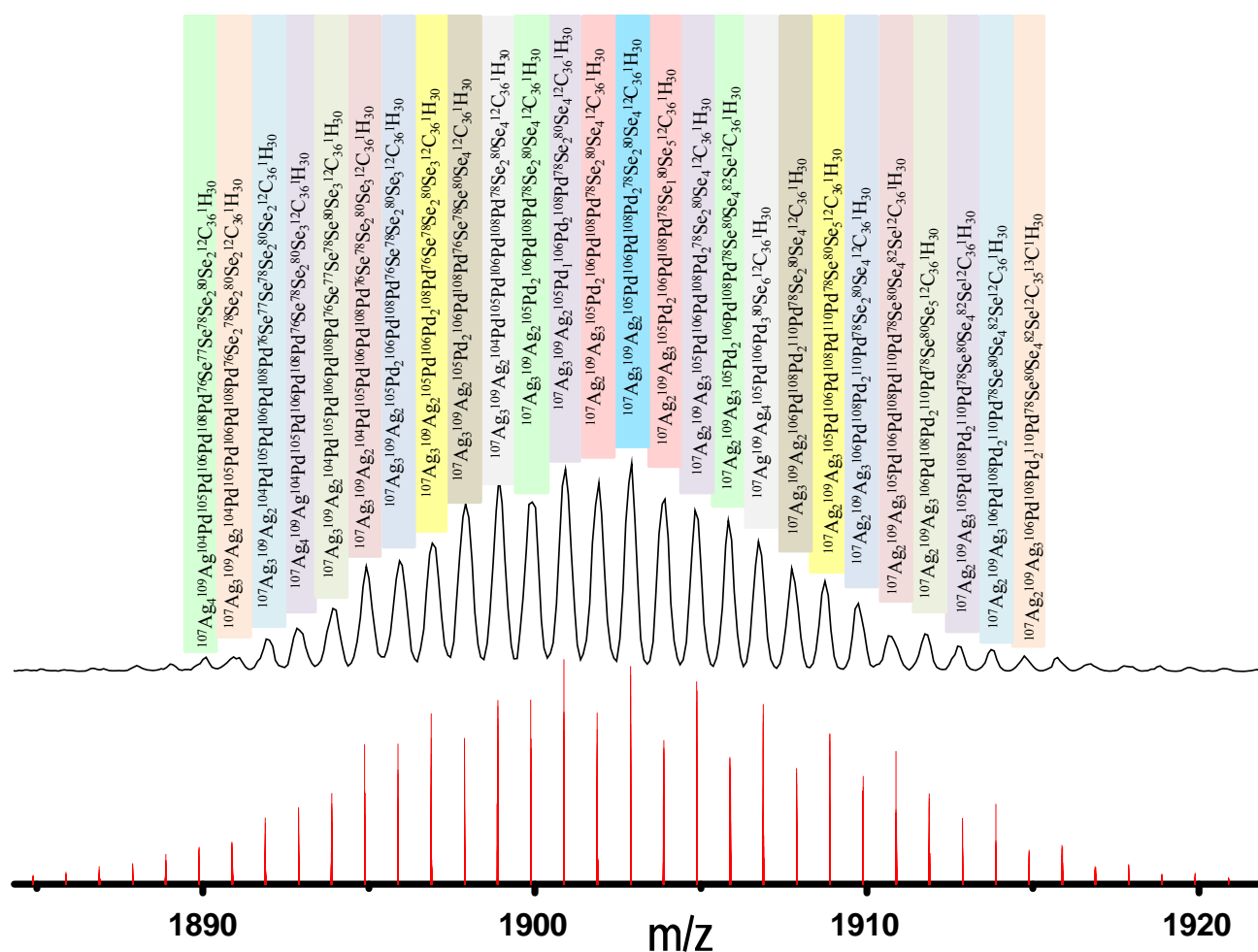


Figure S9. Computed (red trace) and experimental (black trace) mass spectrum of the MS/MS fragment at m/z 1905. All the peaks have been assigned considering the highest abundance from a bunch of peaks contributing to the spectrum. For example, although the peak at m/z 1893 is due to 9 species, only one assignment is given here. However, it may be noted that this number itself is due to the abundance cut-off discussed in Supporting information 1.

Supporting information 10.

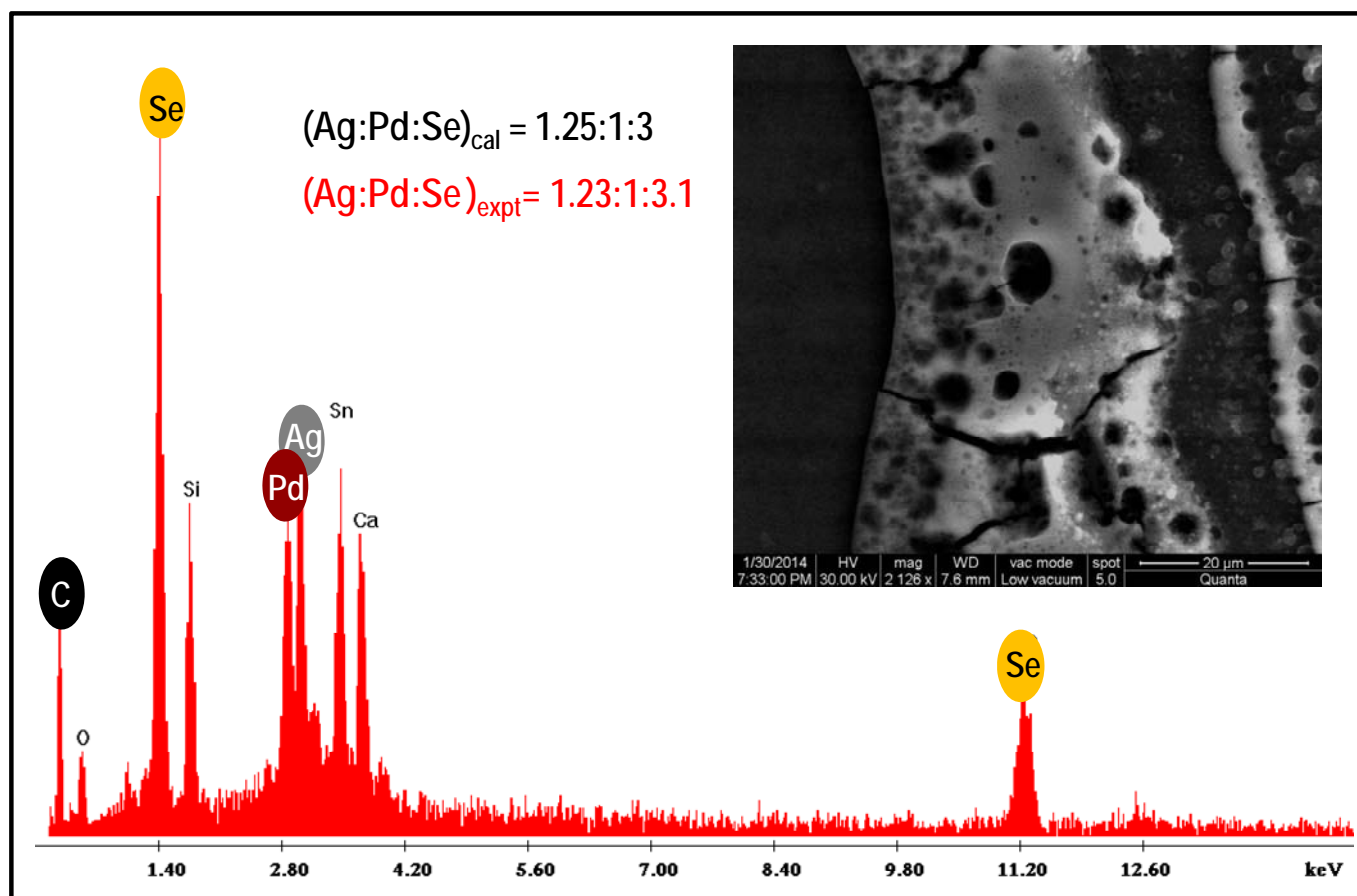


Figure S10. SEM image (inset) and EDAX spectrum of the cluster 2 showing the presence of all the expected elements. The elements O, Si, Sn and Ca are from the substrate (conducting glass) used.

Supporting information 11.

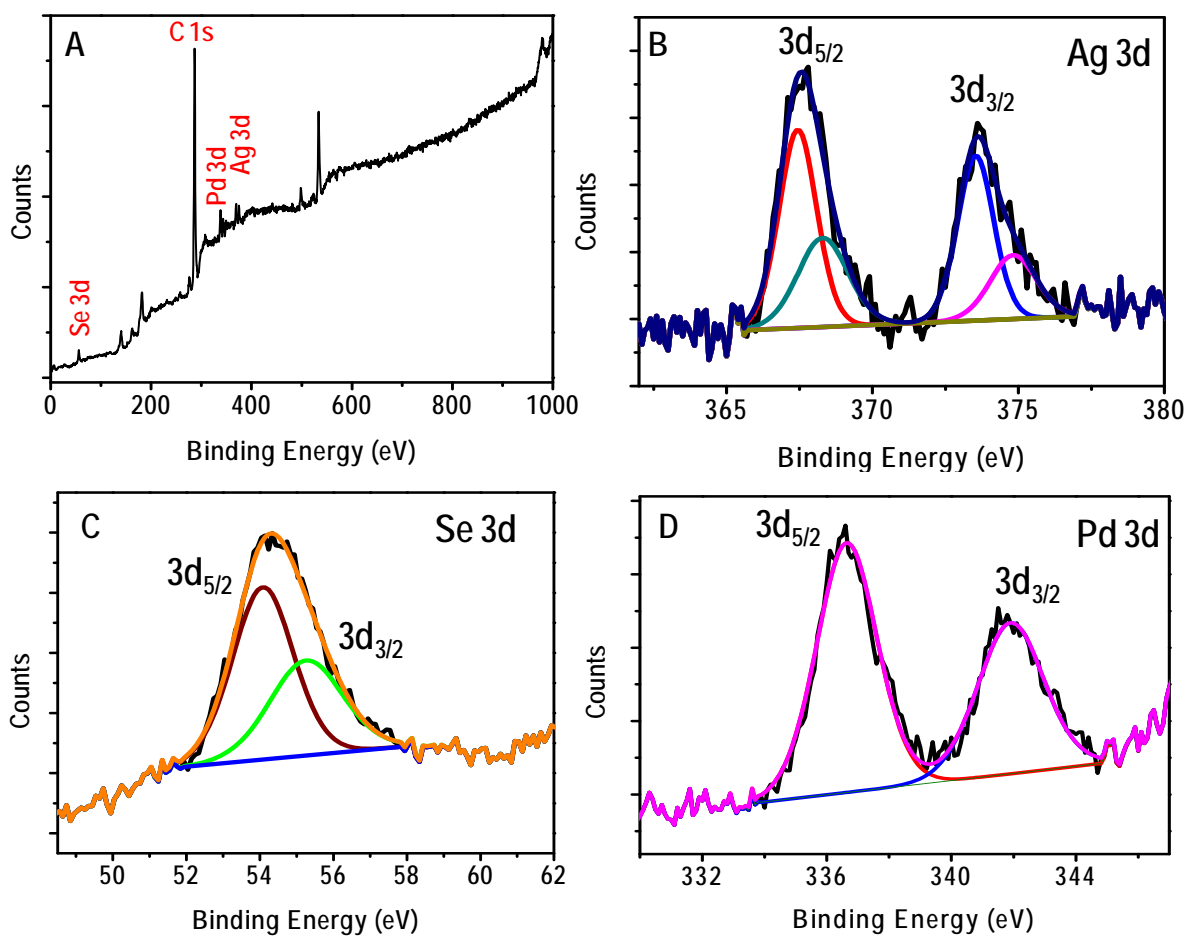


Figure S11. XPS survey spectrum of cluster 2 (A). Expanded XPS spectra for Ag (B), Se (C) and Pd (D) regions, respectively.