

Supporting Information

Identification of effective substrates for the direct analysis of lipids from cell lines using desorption electrospray ionization mass spectrometry

Amitava Srimany¹, Balasubramanyam Jayashree², Subramanian Krishnakumar², Sailaja Elchuri² and Thalappil Pradeep^{1*}

¹Department of Chemistry, Indian Institute of Technology Madras, Chennai 600036, India

²Department of Nanobiotechnology, Vision Research Foundation, Sankara Nethralaya, Chennai 600006, India

**Correspondence to:* T. Pradeep, Department of Chemistry, Indian Institute of Technology Madras, Chennai 600036, India.

E-mail: pradeep@iitm.ac.in

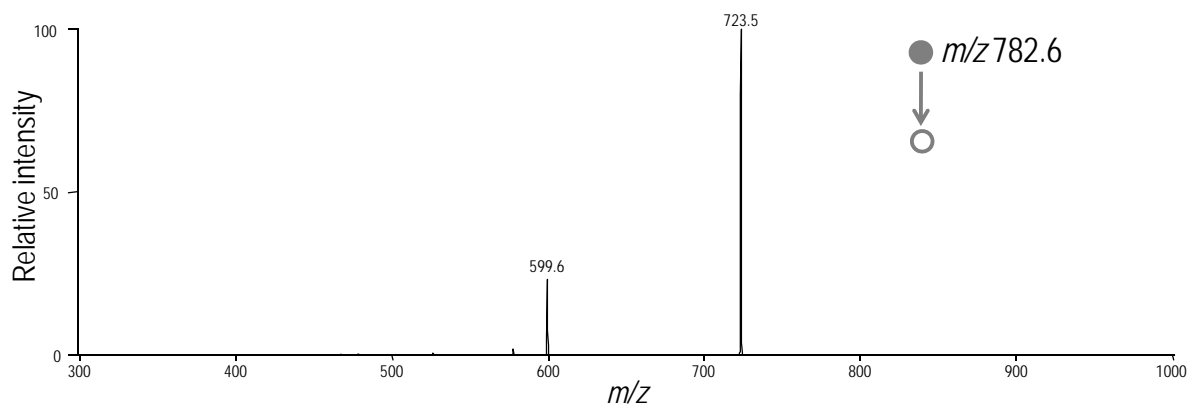


Figure S1. DESI-MS/MS spectrum of m/z 782.6 from WERI-RB1 cells spotted on Whatman 42 filter paper.

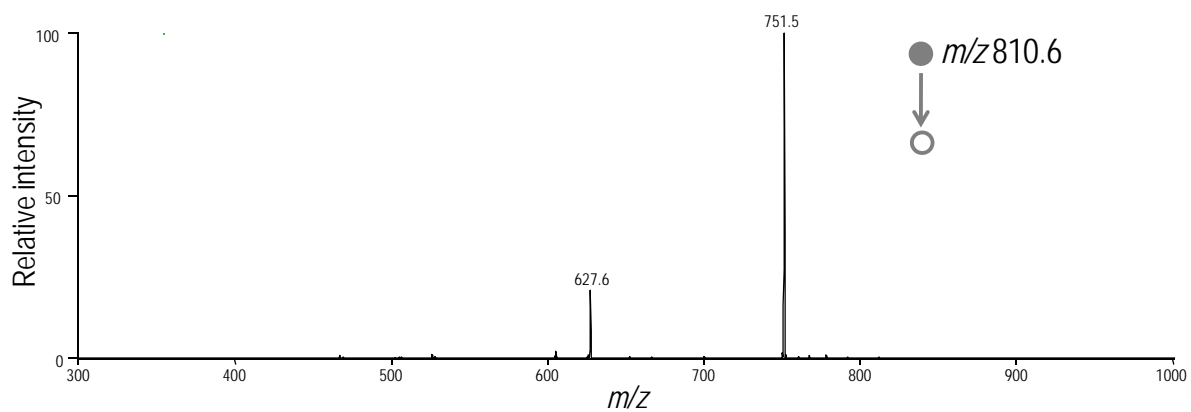


Figure S2. DESI-MS/MS spectrum of m/z 810.6 from WERI-RB1 cells spotted on Whatman 42 filter paper.

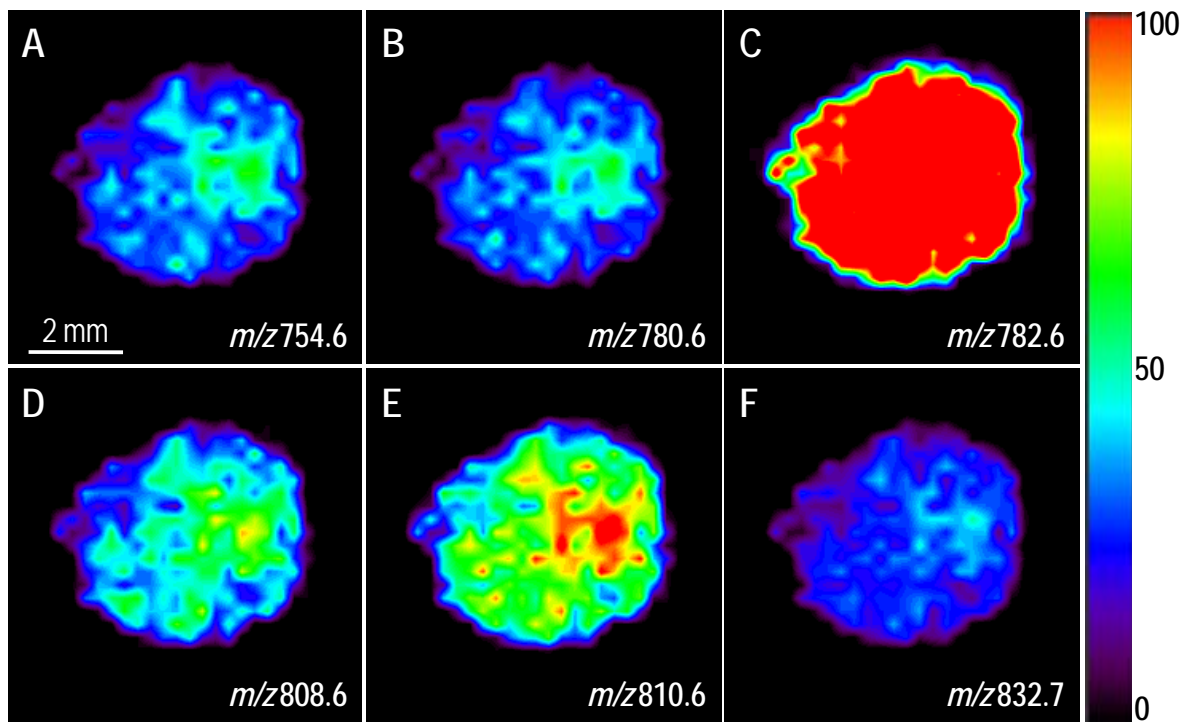


Figure S3. DESI-MS images of different lipids from WERI-RB1 cells spotted on Whatman 40 filter paper. The scale bar applies to all the images. Intensity is colour coded; from black (low) to red (high).